

CONSULTANTS

N/A

SOLANO COMMUNITY COLLEGE

4000 SUISUN VALLEY ROAD, FAIRFIELD, CA 94534

REROOFING OF BUILDING 1500

4000 SUISUN VALLEY ROAD, FAIRFIELD, CA 94534

CODE SUMMARY & REGULATIONS

AS A FACILITY WHICH COMES UNDER THE APPROVAL AND AUTHORITY OF THE DIVISION OF THE STATE ARCHITECT OFFICE OF REGULATION SERVICES (DSA), THIS PROJECT IS SUBJECT TO DRAWING AND JOB SITE REVIEW BY A REPRESENTATIVE OF DSA.

- ADMINISTRATIVE REQUIREMENTS (PARTIAL LISTING ONLY FROM CHAPTER 4, PART 1, TITLE 24, C.C.R.)
 - A COPY OF PARTS 1 AND 2, TITLE 24, C.C.R. AND ALL SECTIONS OF THE CALIFORNIA BUILDING CODE (9 VOLUMES) SHALL BE KEPT ON SITES AT ALL TIMES.
 - ALL CONSTRUCTION CHANGE DOCUMENTS AND ADDENDA TO BE SIGNED BY THE ARCHITECT OF RECORD AND THE OWNER AND APPROVED BY DSA. ALL SUBSTITUTIONS TREATED AS CCDS ARE NOT VALID UNTIL APPROVED BY DSA PER SECTION 4-338, PART 1, TITLE 24.
 - DSA SHALL BE NOTIFIED AT THE START OF CONSTRUCTION AND PRIOR TO THE PLACEMENT OF CONCRETE PER SECTION 4-331, PART 1, TITLE 24.
 - INSPECTOR SHALL BE APPROVED BY DSA AND EMPLOYED DIRECTLY BY OWNER. INSPECTION SHALL BE IN ACCORDANCE WITH SECTION 4-331(B), PART 1, TITLE 24.
 - SUPERVISION OF CONSTRUCTION BY DSA SHALL BE IN ACCORDANCE WITH SECTION 4-334, PART 1, TITLE 24.
 - CONTRACTOR, INSPECTOR, ARCHITECT OF RECORD AND ENGINEERS SHALL SUBMIT VERIFIED REPORTS (DSA 6AE) IN ACCORDANCE WITH SECTION 4-336 AND 4-343, PART 1, TITLE 24.
 - THE ARCHITECT OF RECORD AND STRUCTURAL ENGINEER SHALL PERFORM THEIR DUTIES IN ACCORDANCE WITH SECTION 4-333(A) AND 40341, PART 1, TITLE 24.
 - THE CONTRACTOR SHALL PERFORM HIS DUTIES IN ACCORDANCE WITH SECTION 4-343, PART 1, TITLE 24.
 - TESTING OF MATERIALS AND TESTING LABORATORY SHALL BE IN ACCORDANCE WITH SECTION 4-335, PART 1, TITLE 24.

NON-COMPLYING CONSTRUCTION FOR ALTERATION PROJECTS. STATEMENTS SIMILAR TO THE ONE NOTED IN SECTION 4-317 (C), PART 1, TITLE 24, C.C.R. IS TO BE INCLUDED ON THE COVER DRAWINGS.

THE INTENT OF THE DRAWINGS AND PROJECT MANUAL IS THAT THE WORK OF THE ALTERATION, REHABILITATION OR RECONSTRUCTION IS TO BE IN ACCORDANCE WITH TITLE 24, CALIFORNIA CODE OF REGULATIONS. UPON DISCOVERY OF NON-COMPLYING EXISTING CONDITIONS NOT ADDRESSED BY THE CONTRACT DOCUMENTS AND AFFECTING COMPLIANCE OF FINISHED WORK, A CONSTRUCTION CHANGE DOCUMENT OR SEPARATE SET OF CONSTRUCTION DOCUMENTS ADDRESSING THE NECESSARY REMEDIAL SCOPE OF WORK SHALL BE SUBMITTED TO AND APPROVED BY THE OWNER, CLIENT, ARCHITECT AND DSA BEFORE PROCEEDING WITH THE WORK.

GOVERNING CODES

- 2016 CALIFORNIA ADMINISTRATIVE CODE, TITLE 24, PART 1
- 2016 CALIFORNIA BUILDING CODE, TITLE 24, PART 2, VOLUMES 1 AND 2
- 2016 CALIFORNIA ELECTRICAL CODE, TITLE 24, PART 3
- 2016 CALIFORNIA MECHANICAL CODE, TITLE 24, PART 4
- 2015 CALIFORNIA PLUMBING CODE, TITLE 24, PART 5
- 2016 CALIFORNIA ENERGY CODE, TITLE 24, PART 6
- 2016 CALIFORNIA FIRE CODE, TITLE 24, PART 7
- 2016 CALIFORNIA EXISTING BUILDING CODE, TITLE 24, PART 10
- 2016 CALIFORNIA GREEN BUILDING STANDARDS, TITLE 24, PART 11
- 2016 CALIFORNIA REFERENCED STANDARDS, TITLE 24, PART 12
- TITLE 19 CCR STATE FIRE MARSHAL REGULATIONS
- ACI 318-14 CODE AND COMMENTARY
- 2010 ADA STANDARDS FOR ACCESSIBLE DESIGN
- AISC MANUAL OF STEEL CONSTRUCTION, 14TH EDITION
- 2015 ANSI/AWC NDS-15 REVISED NATIONAL DESIGN SPECIFICATION FOR WOOD CONSTRUCTION
- ASTM STANDARDS CHANGES (EXAMPLE: ASTM E648-04 STANDARD TEST METHOD FOR CRITICAL RADIANT FLUX OF FLOOR)
- 2012 ICC 300-12 STANDARDS ON BLEACHERS, FOLDING TELESCOPIC SEATING & GRANDSTANDS
- 2016 NFPA 13-16 AUTOMATIC SPRINKLER SYSTEMS, WITH 2016 CBC AMENDMENTS
- 2013 NFPA 14-13 INSTALLATION OF STANDPIPE, PRIVATE HYDRANT AND HOSE SYSTEMS, WITH 2016 CBC AMENDMENTS
- 2013 NFPA 17-13 DRY CHEMICAL EXTINGUISHING SYSTEMS
- 2013 NFPA 17A-13 WET CHEMICAL EXTINGUISHING SYSTEMS
- 2016 NFPA 20-16 INSTALLATION OF STATIONARY PUMPS FOR FIRE PROTECTION
- 2013 NFPA 22-13 WATER TANKS FOR PRIVATE FIRE PROTECTION
- 2016 NFPA 24-16 INSTALLATION OF PRIVATE FIRE SERVICE MAINS AND THEIR APPURTENANCES, WITH 2016 CBC AMENDMENTS
- 2008 NFPA 25-13CA INSPECTION, TESTING, MAINTENANCE OF WATER-BASED FIRE PROTECTION SYSTEMS, CALIFORNIA EDITION
- 2016 NFPA 72-16 NATIONAL FIRE ALARM CODE, WITH 2016 CBC AMENDMENTS
- 2016 NFPA 110-16 EMERGENCY AND STANDBY POWER SYSTEMS
- 2015 NFPA 2001-15 CLEAR AGENT FIRE EXTINGUISHING SYSTEMS, WITH 2016 CBC AMENDMENTS
- UL STANDARD CHANGES (EXAMPLE: 2005 UL 38 MANUAL OPERATING SIGNAL BOXES)
- 2003 UL 464-03 AUDIBLE SIGNAL APPLIANCES
- 1999 UL 521-99 HEAT DETECTORS FOR FIRE PROTECTIVE SIGNALING SYSTEMS
- 2002 UL 1971 SIGNALING DEVICES FOR HEARING IMPAIRED

EQUIPMENT ANCHORAGE NOTES

ALL MECHANICAL, PLUMBING AND ELECTRICAL COMPONENTS SHALL BE ANCHORED AND INSTALLED PER DETAILS ON DSA APPROVED CONSTRUCTION DOCUMENTS. WHERE NO DETAIL IS INDICATED, THE FOLLOWING COMPONENTS SHALL BE ANCHORED OR BRACED TO MEET THE FORCE AND DISPLACEMENT REQUIREMENTS PRESCRIBED IN 2016 CBC, SECTIONS 1616A.1.18 THROUGH 1616A.1.26 AND ASCE 7-10 CHAPTER 6 AND 30:

- ALL PERMANENT EQUIPMENT AND COMPONENTS
- TEMPORARY OR MOVABLE EQUIPMENT THAT IS PERMANENTLY ATTACHED (E.G. HARD WIRED) TO THE BUILDING UTILITY SERVICES SUCH AS ELECTRICITY, GAS OR WATER.
- MOVABLE EQUIPMENT WHICH IS STATIONED IN ONE PLACE FOR MORE THAN 8 HOURS AND HEAVIER THAN 400 POUNDS ARE REQUIRED TO BE ANCHORED WITH TEMPORARY ATTACHMENTS.

THE ATTACHMENT OF THE FOLLOWING MECHANICAL AND ELECTRICAL COMPONENTS SHALL BE POSITIVELY ATTACHED TO THE STRUCTURE, BUT NOT BE DETAILED ON THE PLANS. THESE COMPONENTS SHALL HAVE FLEXIBLE CONNECTIONS PROVIDED BETWEEN THE COMPONENTS AND ASSOCIATED DUCTWORK, PIPING AND CONDUIT:

- COMPONENTS WEIGHING LESS THAN 400 POUNDS AND HAVE A CENTER OF MASS LOCATED 4 FEET OR LESS ABOVE THE ADJACENT FLOOR OR ROOF LEVEL THAT DIRECTLY SUPPORT THE COMPONENT.
- COMPONENTS WEIGHING LESS THAN 20 POUNDS, OR IN THE CASE OF DISTRIBUTED SYSTEMS, LESS THAN 5 POUNDS PER FOOT, WHICH ARE SUSPENDED FROM A ROOF OR FLOOR OR HUNG FROM A WALL.

FOR THOSE ELEMENTS THAT DO NOT REQUIRE DETAILS ON THE APPROVED DRAWINGS, THE INSTALLATION SHALL BE SUBJECT TO THE APPROVAL OF THE STRUCTURAL ENGINEER OF RECORD AND THE DSA DISTRICT STRUCTURAL ENGINEER. THE PROJECT INSPECTOR SHALL VERIFY THAT ALL COMPONENTS AND EQUIPMENT HAVE BEEN ANCHORED IN ACCORDANCE WITH THE ABOVE REQUIREMENTS.

PIPING, DUCTWORK AND ELECTRICAL SYSTEM DISTRIBUTION SYSTEM BRACING NOTE

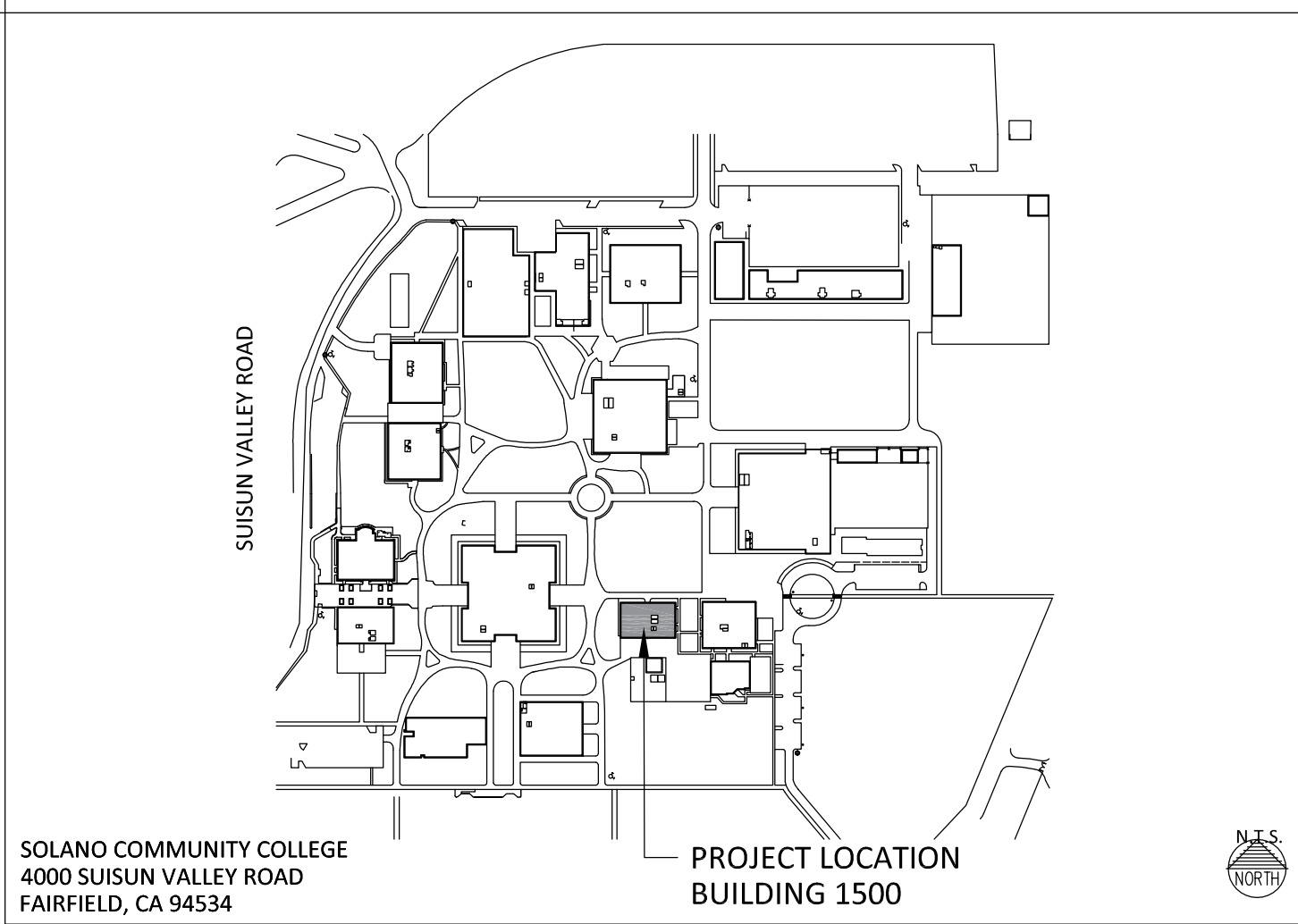
PIPING, DUCTWORK AND ELECTRICAL DISTRIBUTION SYSTEMS SHALL BE BRACED TO COMPLY WITH THE FORCES AND DISPLACEMENTS PRESCRIBED IN ASCE 7-10, SECTION 13.3 AS DEFINED IN ASCE 7-10 SECTION 13.6.8, 13.6.7 AND 13.6.5.6, AND 2016 CBC SECTIONS 1616A.1.23 THROUGH 1616A.1.26. BRACING AND ATTACHMENT TO THE STRUCTURE SHALL BE DETAILED ON APPROVED DRAWINGS OR THEY SHALL COMPLY WITH ONE OF THE OSHPD PRE-APPROVALS (OP#) AS MODIFIED TO SATISFY ANCHORAGE REQUIREMENTS OF ACI 318, APPENDIX D.

COPIES OF THE MANUAL SHALL BE AVAILABLE ON THE JOBSITE PRIOR TO THE START OF HANGING AND BRACING OF THE PIPE, DUCTWORK AND ELECTRICAL DISTRIBUTION SYSTEMS. THE STRUCTURAL ENGINEER OF RECORD SHALL VERIFY ADEQUACY OF THE STRUCTURE TO SUPPORT THE HANGER AND BRACE LOADS.

ABBREVIATIONS

@	AT	MAX	MAXIMUM
A.B.	ANCHOR BOLT	MBS	MEMBERS
AC	ASPHALT CONCRETE	M.D.F.	MEDIUM-DENSITY FIBERBOARD
ACC.	ACCESSIBLE	AGG.	AGGREGATE
A.D.	AREA DRAIN	MIN.	MINIMUM
ADD'L	ADDITIONAL	M.SUITE / M.S.	MASTER SUITE
ADJ. HT.	ADJUSTED HEIGHT	(N)	NEW
A.F.F.	ABOVE FINISH FLOOR	NAT.	NATIONAL
AGG.	AGGREGATE	N.I.C.	NOT IN CONTRACT
ALT.	ALTERNATE	N.T.S.	NOT TO SCALE
ALUM.	ALUMINUM	O.B.	ON CENTER
AMP	AMPERE OR AMPERAGE	O.F.C.I.	OWNER-FURNISHED, CONTRACTOR-INSTALLED
APA	AMERICAN PLYWOOD ASSOCIATION	O.H. / OPP.	OPPOSITE HAND
APPROX.	APPROXIMATE	P.B.	PUSH BUTTON
A.S.L.	ABOVE SEA LEVEL	PERF.	PERFORATED
ASTM	AMERICAN SOCIETY OF TESTING MATERIALS	PL	PLATE
B.F.F.	BELOW FINISH FLOOR	PL HT.	PLATE HEIGHT
BLK'G / BLKING	BLOCKING	PLYWD.	PLYWOOD
BM	BEAM	PR	PAIR
BTWN	BETWEEN	PSI	POUNDS PER SQUARE INCH
B.U.R.	BUILT-UP ROOFING	P.WDR.	POWDER
CALCS.	CALCULATIONS	R.	RISER
C.C.D.	CONSTRUCTION CHANGE DOCUMENT	RECOM.	RECOMMENDATION
CEM. PLAST.	CEMENT PLASTER	REINF.	REINFORCING
C.I.	CAST IRON	RFRTR.	RAFTER
C.J.	CONSTRUCTION JOINT	RM.	ROOM
C.L.	CENTER LINE	R.W. / RWD	REDWOOD
CLG.	CEILING	SAF	SELF-ADHESIVE FLASHING
C.M.U.	CONCRETE MASONRY UNIT	S.A.	SOLID CORE
COL.	COLUMN	S.A.D.	SEE ARCHITECTURAL DRAWINGS
CONC.	CONCRETE	S.C.D.	SEE CIVIL DRAWINGS
CONTR.	CONTRACTOR	SCHED.	SCHEDULE
CSMT	CASEMENT	SD	SMOKE DETECTOR
(D) OR DEMO	DEMOLISH	S.E.D.	SEE ELECTRICAL DRAWINGS
DBL. PL.	DOUBLE PLATE	S.F. / SQ. FT.	SQUARE FOOT
DEG.	DEGREE	SHR.	SHEAR
DET. OR DTL.	DETAIL	SIM.	SIMILAR
D.F.	DRINKING FOUNTAIN	S.L.D.	SEE LANDSCAPE DRAWINGS
DIA.	DIAMETER	S.M.D.	SEE MECHANICAL DRAWINGS
DN	DOWN	S.P.D.	SEE PLUMBING DRAWINGS
DS	DOWNSPOUT	SQ.	SQUARE
DW	DISHWASHER	SQ. IN.	SQUARE INCH
(E)	EXISTING	S.S.D.	SEE STRUCTURAL DRAWINGS
EA.	EACH	ST	STRAP
ELECT.	ELECTRICAL	STR	STRUCTURAL 1
ELEV.	ELEVATION	E.J.	EXPANSION JOINT OR SWITCH SYMBOL
E.S.	EXPANSION JOINT	S.W.	SMOOTH 3 OR 4 SIDES
EMBED.	EMBEDMENT	SYM.	TEMPERED
E.P.S.	EXTRUDED POLYSTYRENE FOAM	S35 / S45	TEMPERED
EXT.	EXTERIOR	TEMP. / T	TEMPERED
F.D.	FLOOR DRAIN	T.H.	THRESHOLD
FDN.	FOUNDATION	T. / THERM	THERMOSTAT
F.F.	FINISHED FLOOR	T.O.C.	TOP OF CURB
F.G.	FUEL GAS	T.O.F.	TOP OF FLOOR
F.J. / FLR. JST.	FLOOR JOIST	T.O.G.B.	TOP OF GRADE BEAM
FLASH'G	FLASHING	T.O.P. / T/P	TOP OF PLATE
FLOR.	FLOOR	T.OF PL	TOP OF PLATE
F.LOR.	FLUORESCENT	T.O.S.	TOP OF SLAB
F.O.S.	FACE OF STUD	T.O.W.	TOP OF WALL
F.R.	FRENCH	TPO	THERMOPLASTIC POLYOLEFIN
FTG.	FOOTING	TRNSM.	TRANSM.
GA.	GAUGE	T&G	TONGUE AND GROOVE
GALV.	GALVANIZED	TYP.	TYPICAL
GFCI	GROUND FAULT CIRCUIT INTERRUPTER	U.N.O.	UNLESS NOTED OTHERWISE
GIR.	GIRDER	UTL. / UTIL.	UTILITY
GLU-LAM	GLUE-LAMINATED	V	VOLTS OR VOLTAGE
G.S.M.	GALVANIZED SHEET METAL	VERT.	VERTICAL
GYP. BD.	GYPSUM BOARD	V.I.F.	VERIFY IN FIELD
H.B.	HOSE BIBB	W.	WOOD
HD	HOLD DOWN	W.A.	WROUGHT IRON
H.H.	HEAD HEIGHT	WL	WEATHERPROOF
HMF	HORIZONTAL METAL FRAME	W.P.	WEEP SCREED
HORIZ.	HORIZONTAL	W.W.F.	WELDED WIRE FABRIC
HR.	HOUR	W.W.M.	WELDED WIRE MESH
INFO.	INFORMATION	W/D	WASHER / DRYER
INSUL.	INSULATION	#	POUND OR NUMBER
INT.	INTERIOR		
JST.	JOIST		
LB.	POUND		
LEV. / LVL	LEVEL		
LT.	LIGHT		
LWT.	LIGHTWEIGHT		

PROJECT LOCATION



SYMBOLS

	COLUMN GRID LINE NUMBER HORIZONTAL LETTERS VERTICAL		INTERIOR ELEVATIONS DETAIL IDENTIFICATION SHEET NUMBER / ELEVATION
	STUDIO 117		REVISION ADDENDUM LETTER SUPPLEMENTAL INSTRUCTION REVISION CLOUD
	DOOR SYMBOL DOOR NUMBER		WORK POINT TARGET
	WINDOW SYMBOL WINDOW NUMBER		MATCH LINE TARGET
	FINISH SYMBOL FINISH MATERIAL IDENTIFICATION		ARCHITECTURAL WALL PANEL SYMBOL
	SECTION CUT SECTION IDENTIFICATION SHEET NUMBER		SHEET NOTE SYMBOL
	DETAIL REFERENCE DETAIL IDENTIFICATION SHEET NUMBER		ELEVATION TAG

SCOPE OF WORK

SCOPE OF WORK INCLUDES, BUT IS NOT LIMITED TO THE FOLLOWING:

- DEMOLITION OF (E) ROOFING AND RE-ROOFING AT EXISTING BUILDING 1500.

DEFERRED APPROVALS

THE FOLLOWING ITEMS SHALL BE SUBMITTED FOR DEFERRED APPROVAL:

- NONE

SHEET LIST

STATEMENT OF GENERAL CONFORMANCE

THESE DRAWINGS AND/OR SPECIFICATIONS LISTED BELOW HAVE BEEN PREPARED BY OTHER DESIGN PROFESSIONALS OR CONSULTANTS WHO ARE LICENSED AND/OR AUTHORIZED TO PREPARE SUCH DRAWINGS IN THIS STATE. THESE DOCUMENTS HAVE BEEN EXAMINED BY ME FOR COMPLIANCE WITH THE DESIGN INTENT OF REGULATIONS AND THE PROJECT SPECIFICATIONS PREPARED BY ME.

ITEMS LISTED BELOW ARE ACCEPTABLE FOR INCORPORATION INTO THE CONSTRUCTION OF THIS PROJECT FOR WHICH I AM THE INDIVIDUAL DESIGNATED TO BE IN GENERAL RESPONSIBLE CHARGE (OR FOR WHICH I HAVE BEEN DELEGATED RESPONSIBILITY FOR THIS PORTION OF THE WORK)

LIST OF ITEMS REVIEWED AND ACCEPTED: ALL ITEMS IN THE SHEET INDEX, EXCEPT ARCHITECTURAL DRAWINGS.

Eric D. Dwyer 8/18/17 C-35630 1/31/19
SIGNATURE OF ARCHITECT DATE LICENSE NUMBER EXPIRATION DATE

GENERAL

G0.1 TITLE SHEET

ARCHITECTURAL

- A2.0 ROOF PLAN - DEMO
- A2.1 ROOF PLAN - NEW
- A8.1 DETAILS

ARCHITECT



303 POTRERO STREET, SUITE 781 SANTA CRUZ, CA 95060
40 SOUTH FIRST STREET, SUITE 404 | SAN JOSE, CA 95113
450 CHANDOURNE ROAD, SUITE G | FAIRFIELD, CA 94534

WWW.MADI-ARCH.COM
P | 800.725.0571

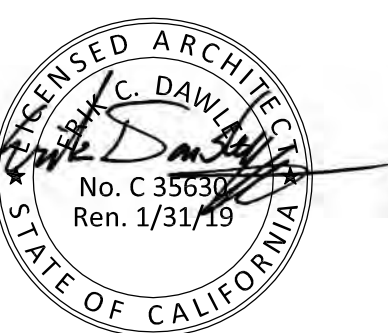
OWNER



4000 SUISUN VALLEY ROAD
FAIRFIELD, CA 94534

CONSULTANT

PROFESSIONAL STAMP:



PROJECT:

RE-ROOFING OF BUILDING 1500

4000 SUISUN VALLEY ROAD, BLDG 1500
FAIRFIELD, CA 94534

ISSUE DATES

REV	DESCRIPTION	DATE
-	BID SET	8/21/17

PROJECT CODE: SCCD-11

START DATE: 6/1/17

DRAWN BY: XX

CHECKED BY: XX

SHEET NAME:

TITLE SHEET

AGENCY APPROVAL:

SHEET NUMBER:

G0.1

© 2017

RE-ROOFING OF BUILDING 1500 SOLANO COMMUNITY COLLEGE DISTRICT

OWNER



SOLANO
COMMUNITY COLLEGE
4000 SUISUN VALLEY ROAD
FAIRFIELD, CA 94534

CONSULTANT

PROFESSIONAL STAMP:



PROJECT:

**RE-ROOFING OF
BUILDING 1500**

4000 SUISUN VALLEY ROAD, BLDG 1500
FAIRFIELD, CA 94534

ISSUE DATES

REV	DESCRIPTION	DATE
-	BID SET	8/21/17

PROJECT CODE: SCCD-11

START DATE: 6/1/17

DRAWN BY: XX

CHECKED BY: XX

SHEET NAME:

ROOF PLAN - NEW

AGENCY APPROVAL:

SHEET NUMBER:

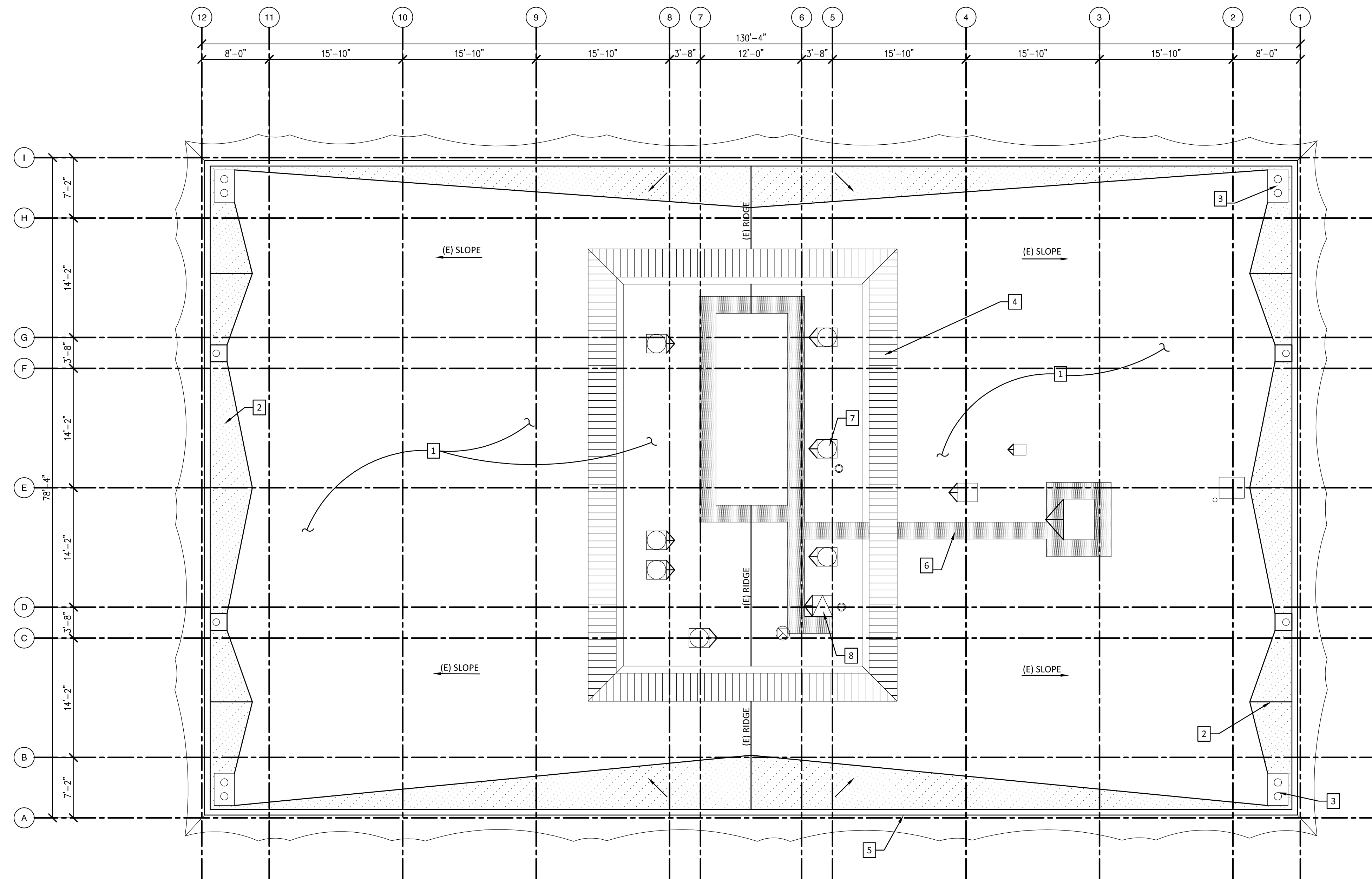
A2.1

GENERAL NOTES

- A. ALL EXISTING EQUIPMENT ON ROOF TO REMAIN. CONTRACTOR IS RESPONSIBLE FOR MAINTAINING THE INTEGRITY OF ALL EQUIPMENT, UTILITY LINES AND OTHER DEVICES EXISTING ON THE ROOF
- B. CONTRACTOR IS REQUIRED TO VERIFY ALL EXISTING EQUIPMENT AND CONDITIONS ON THE ROOF.
- C. CONTRACTOR IS REQUIRED TO VERIFY ALL DIMENSIONS
- D. CONTRACTOR IS REQUIRED TO NOTIFY THE OWNER, ITS REPRESENTATIVE & THE ARCHITECT PRIOR TO DISCONNECTING ANY EXISTING EQUIPMENT AND/OR UTILITY LINES. PROVIDE MINIMUM OF 48-HOUR WRITTEN NOTICE PRIOR TO DISCONNECTING.
- E. CONTRACTOR IS RESPONSIBLE FOR STAGING, FENCING AND SECURITY OF ALL MATERIALS AND EQUIPMENT.
- F. REMOVE EXISTING BUILT UP ROOF TO EXISTING SLOPED PLYWOOD SHEATHING. CLEAN ROOF AND REMOVE ANY DEBRIS, NAILS AND OTHER APPURTENANCES PRIOR TO INSTALLING NEW ROOF.
- G. IT IS THE CONTRACTORS RESPONSIBILITY TO NOTIFY THE OWNER, OWNERS REPRESENTATIVE & ARCHITECT OF ANY EXISTING DEFORMITIES SUCH AS MOLD, DRY ROT ETC. STRUCTURAL DEFICIENCIES IN EXISTING STRUCTURE REVEALED DURING THE DEMOLITION PHASE WILL NEED TO ADDRESS BY THE STRUCTURAL ENGINEER AND MAY REQUIRE APPROVAL OF DIVISION OF STATE ARCHITECT (DSA). IN SUCH CASES, CONTRACTOR IS REQUIRED TO PROCEED WITH THAT PORTION OF WORK ONLY AFTER WRITTEN APPROVAL BY THE STRUCTURAL ENGINEER AND/OR DSA. THIS DETERMINATION WILL BE MADE BY THE ARCHITECT AND ITS ENGINEER AND THE CONTRACTOR WILL BE PROVIDED A WRITTEN DIRECTIVE ON REMEDYING THE DEFICIENCY. ANY WORK CARRIED OUT PRIOR TO OR WITHOUT APPROVAL OF ENGINEER OR DSA (AS CASE MAY BE), WILL BE AT RISK. THE OWNER, ITS REPRESENTATIVE AND THE ARCHITECT (AND ITS ENGINEERS) WILL NOT BE RESPONSIBLE FOR ANY COSTS INCURRED FOR NON-COMPLIANT WORK CARRIED OUT WITHOUT THE EXPRESS APPROVAL OF THE ENGINEER OR DSA.
- H. PROVIDE PRECAST CONCRETE SPLASH BLOCK AT ALL EXISTING AND NEW DOWNSPOUTS THAT ARE DAYLIGHTED TO PAVEMENT AND LANDSCAPED AREAS. SPLASH BLOCKS TO SLOPE AWAY FROM BUILDING. AVOID PLACEMENT OF SPLASH BLOCKS WHERE IT DIRECTLY INTERFERES WITH PATH OF TRAVEL OR POSES A HAZARD. SPLASH BLOCKS TO HAVE MINIMUM DIMENSION OF 20" L X 12" W X 3" H. PROVIDE CUT SHEETS AND SAMPLE OF SPLASH BLOCK AS PART OF SUBMITTAL PROCESS.
- I. ALL EXISTING PIPING, CONDUIT, OR STRUCTURAL PENETRATIONS THROUGH ROOF ARE TO BE FLASHED PER ROOFING MFR'S STANDARD DETAILS.

KEYNOTES

- 1 (N) TPO ROOFING SYSTEM, TYP. THROUGHOUT. SEE DETAIL 1/A8.1
- 2 (N) SLOPED PLYWOOD CRICKET, TYP. MIN. 1/4" SLOPE TOWARDS DRAIN & RIDGE MIN. 2" ABOVE DRAIN RIM, V.I.F.
- 3 (E) ROOF DRAIN TO REMAIN, TYP. SEE DETAIL 2/A8.1. PROTECT DURING CONSTRUCTION & FLUSH AT COMPLETION OF WORK
- 4 (E) MECHANICAL SCREEN TO REMAIN, TYP. PROVIDE MFR'S STANDARD FLASHING BOOTS @ STANCHIONS SIM. TO DETAIL 3/A8.1
- 5 (N) PARAPET CAP, TYP. SEE DETAIL 1/A8.1
- 6 (N) TPO WALK PADS, TYP. LOCATE AS SHOWN. APPLY PER MFR'S INSTRUCTIONS
- 7 (E) CURB-MOUNTED MECHANICAL EQUIPMENT TO REMAIN, TYP. SEE DETAIL 4/A8.1
- 8 (E) ROOF HATCH TO REMAIN, SIM. TO DETAIL 4/A8.1
- 9 (E) CURB-MOUNTED HVAC EQUIPMENT TO REMAIN, SEE DETAIL 5/A8.1



1 NEW ROOF PLAN

SCALE : 1/8"=1'-0"

RE-ROOFING OF BUILDING 1500 + SOLANO COMMUNITY COLLEGE DISTRICT

