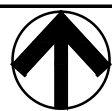


Jan 09, 2013 - 8:32am Ionic \\server\network\Cadd Files\2012\12022\SCCD Building 600\CAD Files\A2-2\_NEW WORK FLOOR PLAN-Bldg 600.dwg

B1 NEW FLOOR PLAN

1/8" = 1'-0"



FLOOR PLANS FOR REFERENCE ONLY.  
REFER TO TECHNICAL SPECIFICATIONS  
FOR FULL SCOPE, DEVICE QUANTIIES,  
ETC.

B5 DRAWING NOTES

A5 LEGEND

D5 GENERAL NOTES

- 1 (E) RAIN WATER LEADER TO REMAIN.  
2 LINE OF (E) ROOF OVERHANG ABOVE.  
3 INFILL (E) EXTERIOR DOOR OPENING - PREP FOR (N) WINDOW - SEE  
4 ACCESSIBLE HI-LO DRINKING FOUNTAIN, S.P.D., SEE

BUILDING 600  
ADMINISTRATION

SOLANO COMMUNITY  
COLLEGE DISTRICT

FAIRFIELD, CA

ISSUE		
DESCRIPTION	DATE	MARK
		1
		2
		3

PROJECT NO: 12022  
DATE: 12/10/12  
DRAWING FILE: A2.2.dwg  
DRAWN BY: F.B.B./J.B.  
CHECKED BY: R.L.H.

SHEET TITLE  
NEW FLOOR PLAN

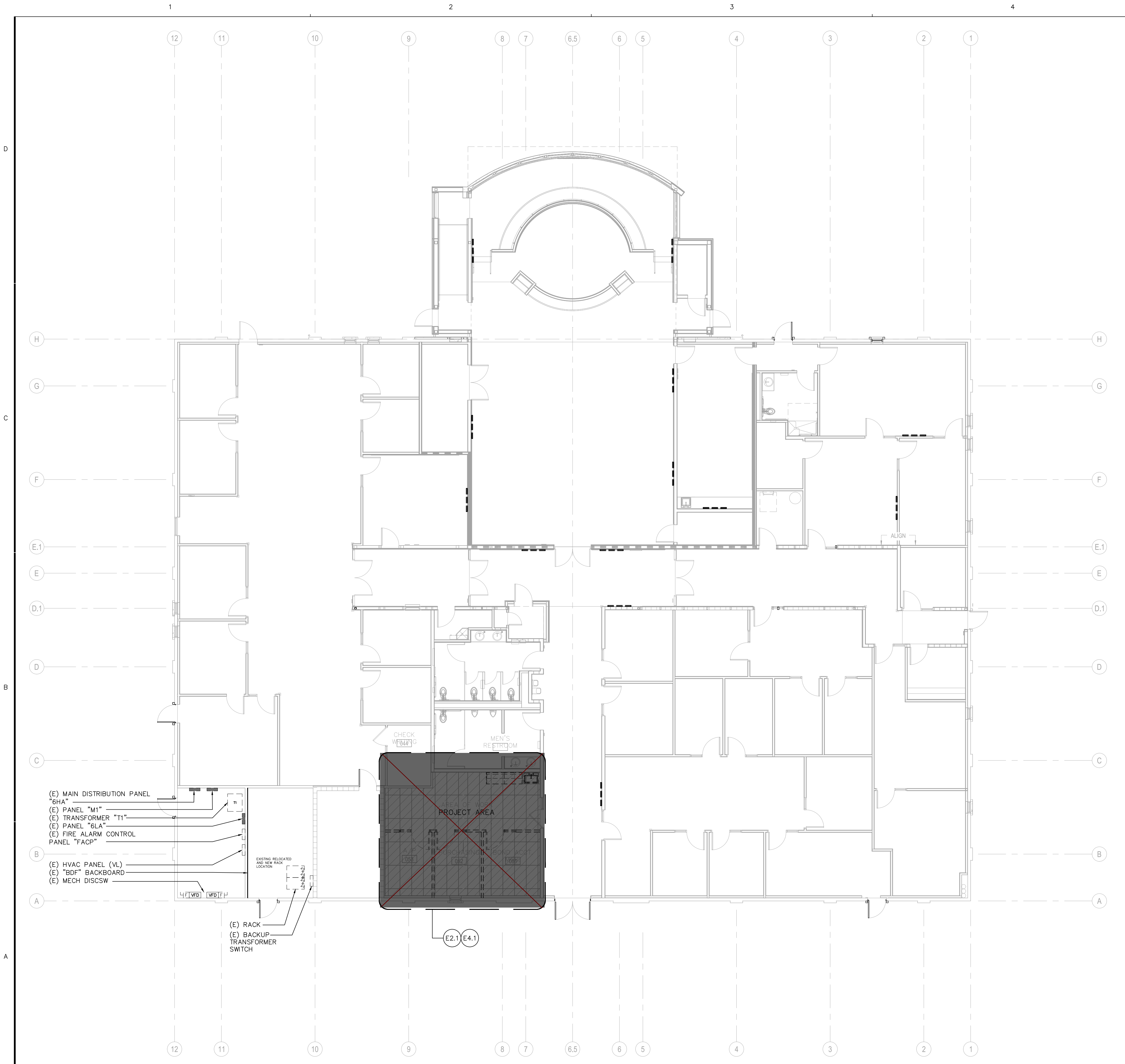
SHEET NO  
A2.2

CONSULTANTS

LEED CREDITS THIS SHEET

APPROVALS

PROJECT



A1 OVERALL FLOOR PLAN – BUILDING 600

SCALE: 1/8"=1'-0"

FLOOR PLANS FOR REFERENCE ONLY.  
REFER TO TECHNICAL SPECIFICATIONS  
FOR FULL SCOPE, DEVICE QUANTITIES,  
ETC.

CONSULTANTS

BID SET  
APPROVALS

PROJECT

BUILDING 600

SOLANO COMMUNITY  
COLLEGE DISTRICT –  
FAIRFIELD, CA

ISSUE		
DESCRIPTION	DATE	MARK
		1
		2
		3

PROJECT NO: 17064.00  
DATE: NOV. 30, 2017

DRAWN BY: D.B.  
CHECKED BY: R.L.H.  
SHEET TITLE

OVERALL FLOOR PLAN

SHEET NO

E2.0

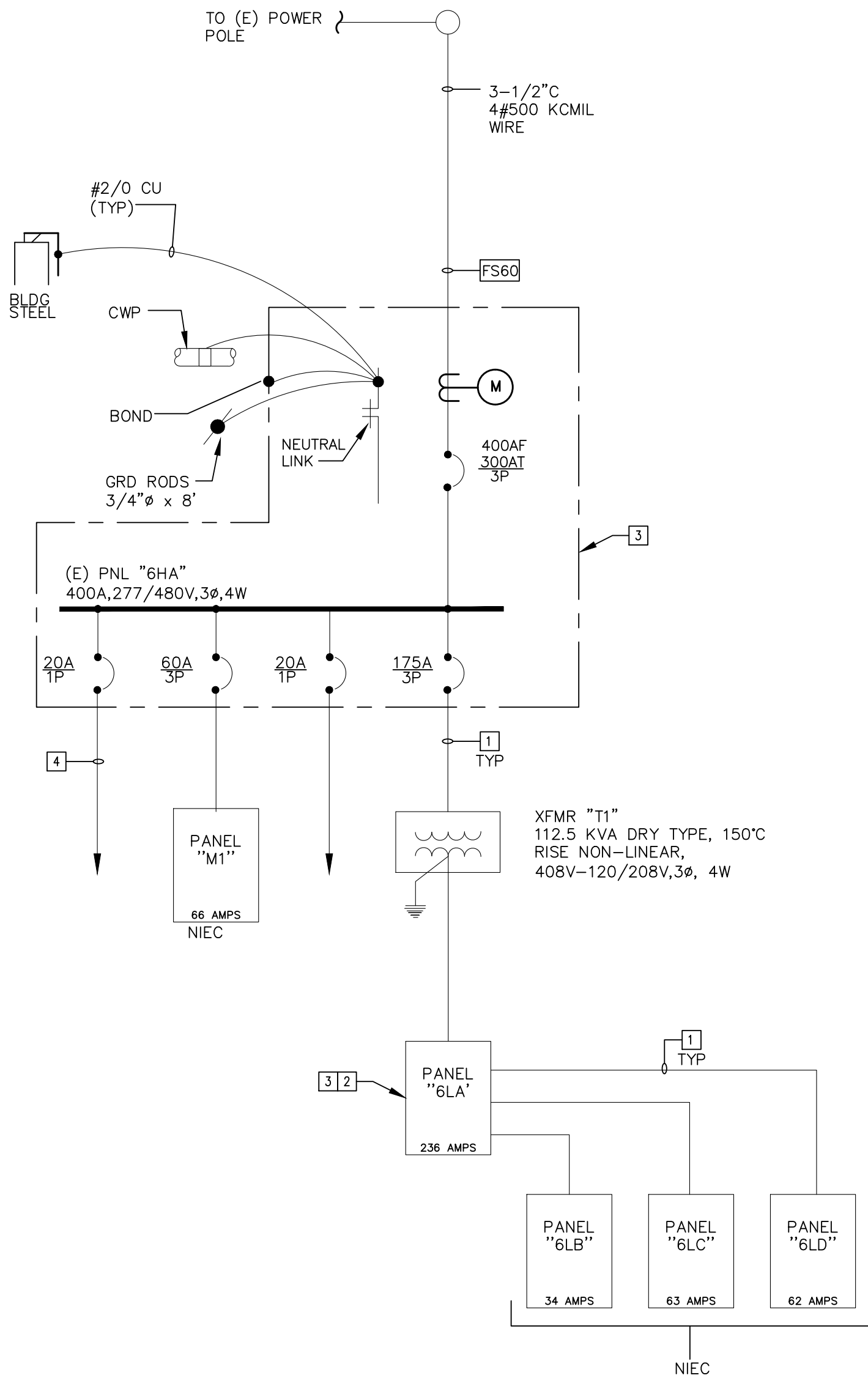


NEW <input type="checkbox"/> EXIST'G <input type="checkbox"/>		PANEL "6HA"		AIC: 10,000 AMPS	
VOLTAGE: 277/480V-3ø-4W		MOUNTING: SURFACE		MAIN: 300A/3P MCB	
BUS: 400 AMP		TYPE: BOLT-ON		KVA: 152.5	
BUS MAT'L: SILVER PLATED AL				CURRENT: 183.4 AMPS	
LOAD		KVA	CB NO	LOAD	
LTG- PORTICO	0.3	1	2	0.4	EMERGENCY LIGHTING
LIGHTING	1.0	3	4	0.2	EXIT SIGNS
LIGHTING	1.9	5	6	0.3	EMERGENCY LIGHTING
LIGHTING	1.8	7	8	0.3	EMERGENCY LIGHTING
LIGHTING	1.0	9	10	0.2	LTG- BOARD ROOM
LIGHTING	0.4	11	12	0.3	LTG- BOARD ROOM
LIGHTING	1.5	13	14		SPARE
LIGHTING	0.1	15	16		
LIGHTING	0.8	17	18		
LTG- EXTERIOR	0.5	19	20		
LTG- EXTERIOR	0.5	21	22		
SPARE		23	24		
		25	26		
		27	28		
		29	30		
SPACE		31	32	FFB	SPACE
		33	34		
TRANSFORMER "T1"	28.7	35	36	225	18.3
	28.7	37	40	7	18.3
	28.7	39	42	3	18.3
		41			

NEW <input type="checkbox"/> EXIST'G <input type="checkbox"/>		PANEL "6LA"		AIC: 10,000 AMPS	
VOLTAGE: 120/208V-3Ø-4W		MOUNTING: SURFACE		MAIN: 100% RATED 350A/3P	
BUS: 400 AMP		TYPE: BOLT-ON		KVA: ⑦ 86.1	
BUS MAT'L: SILVER PLATED AL		CURRENT: ⑦ 239.2 AMPS			
LOAD		KVA	CB NO	LOAD	
REC- RMS. 042, 052, 053	1.3	1	2	0.8	FURNITURE SAYS. RM. 035
REC- RMS 041, 042	1.3	3	4	0.8	FURNITURE SAYS. RM. 035
REC- RMS. 040, 041	1.4	5	6	0.8	FURNITURE SAYS. RM. 035
REC- COPIER- RM. 050	1.2	7	8	0.8	FURNITURE SAYS. RM. 035
STUDENT SERVICES-600	0.6	9	10	1.0	"FACP"
REC- RM. 051	0.5	11	12	0.8	HVAC CONTROL PANEL
REC- RM. 001	0.5	13	14	0.7	REC- RM. 044
AUTO FLUSH- 048-049	1.0	15	16	1.1	REC- RMS. 045-046
STUDENT SERVICES-600A/B	1.0	17	18	0.4	REC- RMS. 047, 057
REC- EXTERIOR	0.2	19	20	1.2	AUTOMATIC DOOR
REC- EXT. DISPLAY CASE	0.8	21	22	1.6	REC- RACK MTD- RM. 054
SPARE		23	24	1.6	REC- RACK MTD- RM. 054
		25	26	1.6	REC- RACK MTD- RM. 054
FC-1 & COND. PUMP	0.1	27	28	1.6	REC- RACK MTD- RM. 054
PANEL "6LC"	0.2	29	30	100	4.0
	7.5	31	32	4.0	
	7.5	33	34	4.0	
PANEL "6LD"	7.5	35	36	0.7	REC- ROOF
	7.4	37	38	0.9	EF-2
	7.4	39	40	30	1.5
	7.4	41	42	2	1.5
		41			

PANEL NOTES:

- LOCK-ON DEVICE
- LOCK-ON DEVICE: CIRCUIT IS CONTROLLED BY "EMS" AND INVERTORS #1 AND #2 IN CASE OF POWER FAILURE THE LIGHTS SHALL COME ON AT FULL BRIGHTNESS.
- CIRCUIT SHALL BE CONTROLLED BY "SMART THERMOSTAT", "EMS" AND VIA INVERTER UNIT #3.
- LOCK-ON DEVICE: NIGHT LIGHT STAYS ON 24/7.
- LOCK-ON DEVICE: CONTROLLED THROUGH LIGHTING CONTROL AT "SMART THERMOSTAT" AND INVERTER UNITS #4 AND #5 IN CASE OF POWER FAILURE THE EMERGENCY LIGHTS SHALL COME ON AT FULL BRIGHTNESS.
- CIRCUIT BREAKER CONTROLLED BY PHOTOCELL AND SHALL BE "ON" AT DUSK AND "OFF" AT DAWN. SELECTED LIGHT FIXTURE SHOWN AS "EM" SHALL BE CONNECTED VIA INVERTER #3 AND INCASE OF POWER FAILURE, THEY SHALL COME ON AT FULL BRIGHTNESS.



1 SINGLE LINE DIAGRAM

- (E) FEEDER TO REMAIN, TYP.
- PROVIDE TYPEWRITTEN UPDATED LOAD DIRECTORY.
- SEE PANELBOARD SCHEDULE FOR LOAD DESCRIPTION AND/OR REFERENCE.
- (E) BRANCH CKT WIRING TO REMAIN, TYP.

FEEDER SCHEDULE				
AMPS NOM.	TAG	3-PHASE 3W (1Ø,3W-DWELLING) CONDUCTOR	3-PHASE 4W CONDUCTOR	EQUIPMENT GROUND
20	F02	1/2" C(3) #12 AWG	1/2" C(4) #12 AWG	#12
30	F03	1/2" C(3) #10 AWG	1/2" C(4) #10 AWG	#10
40	F04	3/4" C(3) #8 AWG	3/4" C(3) #8 AWG	#10
50	F05	3/4" C(3) #6 AWG	1" C(4) #6 AWG	#10
70	F07	1" C(3) #4 AWG	1-1/4" C(4) #4 AWG	#6
90	F09	1-1/4" C(3) #3 AWG	1-1/4" C(4) #3 AWG	#6
100	F10	1-1/4" C(3) #2 AWG	1-1/4" C(4) #2 AWG	#6
125	F12	1-1/2" C(3) #1 AWG	1-1/2" C(4) #1 AWG	#6
150	F15	1-1/2" C(3) #1/0 AWG	2" C(4) #1/0 AWG	#6
175	F17	2" C(3) #2/0 AWG	2" C(4) #2/0 AWG	#6
200	F20	2" C(3) #3/0 AWG	2" C(4) #3/0 AWG	#6
225	F22	2" C(3) #4/0 AWG	2-1/2" C(4) #4/0 AWG	#4
250	F25	2-1/2" C(3) #250 KCMIL	2-1/2" C(4) #250 KCMIL	#4
300	F30	2-1/2" C(3) #350 KCMIL	3" C(4) #350 KCMIL	#4
400	F40	3-1/2" C(3) #500 KCMIL	4" C(4) #500 AWG	#3
600	F60	(2) 2-1/2" C(3) #350 KCMIL	(2) 3" C(4) #350 KCMIL	#1
800	F80	(2) 3-1/2" C(3) #500 KCMIL	(2) 4" C(4) #500 KCMIL	1/0
1200	F120	(3) 3-1/2" C(3) #600 KCMIL	(3) 4" C(4) #600 KCMIL	4/0
1600	F160	(4) 3-1/2" C(3) #600 KCMIL	(4) 4" C(4) #600 KCMIL	4/0
2000	F200	(5) 4" C(3) #600 KCMIL	(5) 4" C(4) #600 KCMIL	250KCM
4000	F400	(10) 4" C(3) #600 KCMIL	(10) 4" C(4) #600 KCMIL	500KCM

- NOTES: 1 CONDUCTORS PROVIDED BY UTILITY COMPANY. COORDINATE AS REQUIRED.  
2 PROVIDE BUS DUCT AND CONNECTION PER UTILITY CO. COORDINATE AS REQUIRED

FLOOR PLANS FOR REFERENCE ONLY.  
REFER TO TECHNICAL SPECIFICATIONS  
FOR FULL SCOPE, DEVICE QUANTITIES,  
ETC.

BID SET  
APPROVALS

BUILDING 600

SOLANO COMMUNITY  
COLLEGE DISTRICT –  
FAIRFIELD, CA

ISSUE		
DESCRIPTION	DATE	MARK
		1
		2
		3

PROJECT NO: 17064.00  
DATE: NOV. 30, 2017

DRAWN BY: D.B.  
CHECKED BY: R.L.H.  
SHEET TITLE

SINGLE LINE DIAGRAM  
& PANELBOARDS

SHEET NO

E4.1