

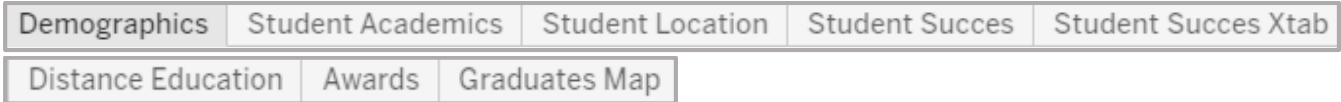
How to use the interactive data dashboard for your data driven decision

This page will contain links to our interactive data sets. The data is distributed via Tableau Public.

Navigating the Interactive Data

http://www.solano.edu/research_planning/worksheet1test.php

Navigate the interactive data sets by selecting and clicking to open one of the tabs listed below:

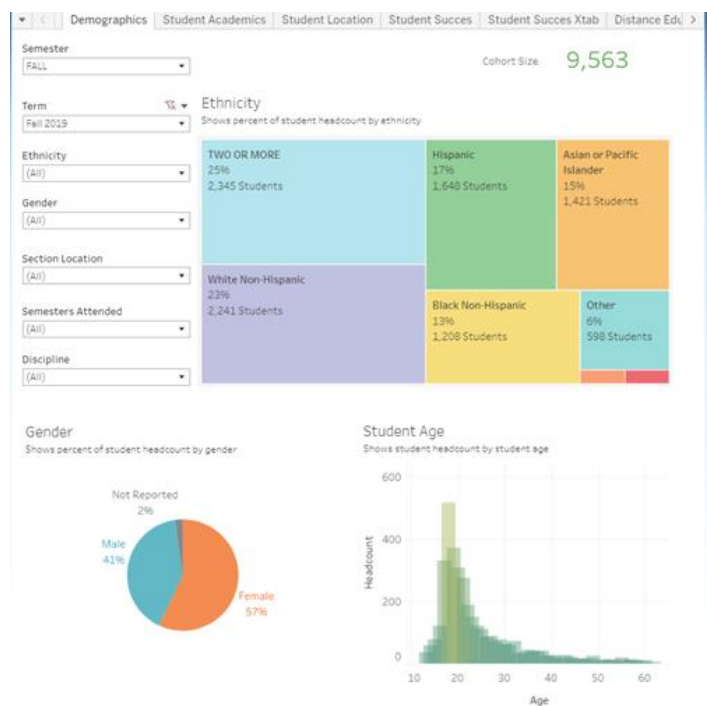


Demographics

This dashboard shows basic demographic information about a specific student cohort selected using the filters on the left-hand side.

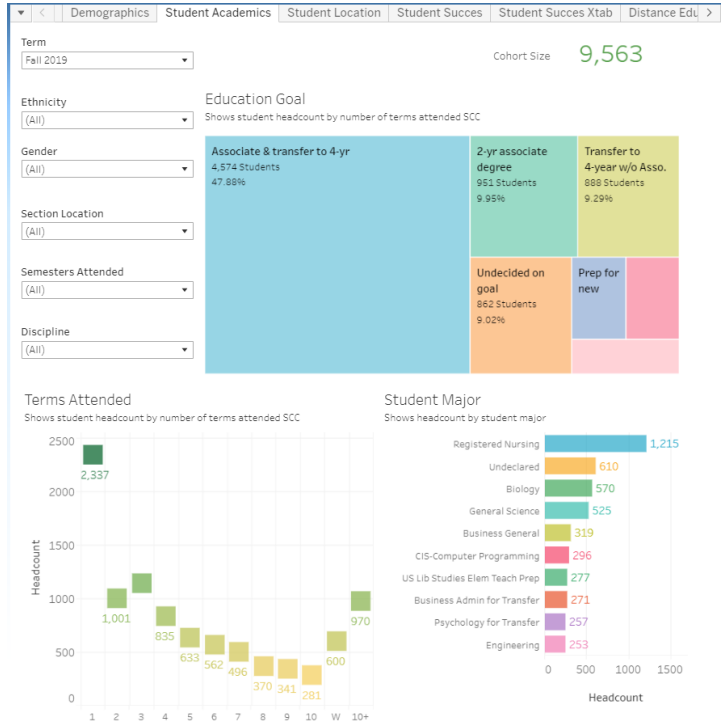
The filters available are

- Semester
- Term
- Ethnicity
- Gender
- Section Location
- Semesters Attended
- Discipline



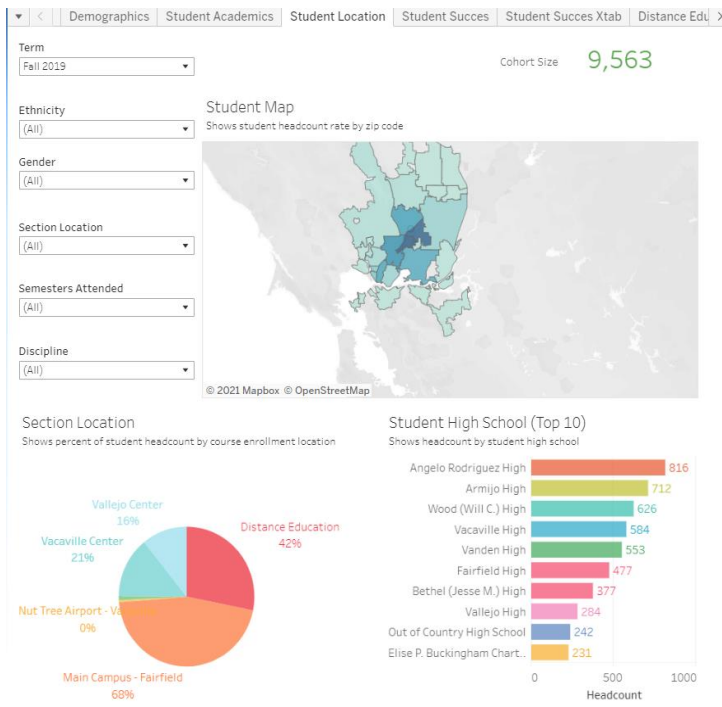
Student Academics

This dashboard shows a variety of data related to a student's academic standing and goals.



Student Location

This dashboard shows information about students by location. This includes a map based on zip code, section location for enrolled courses as well as high school.



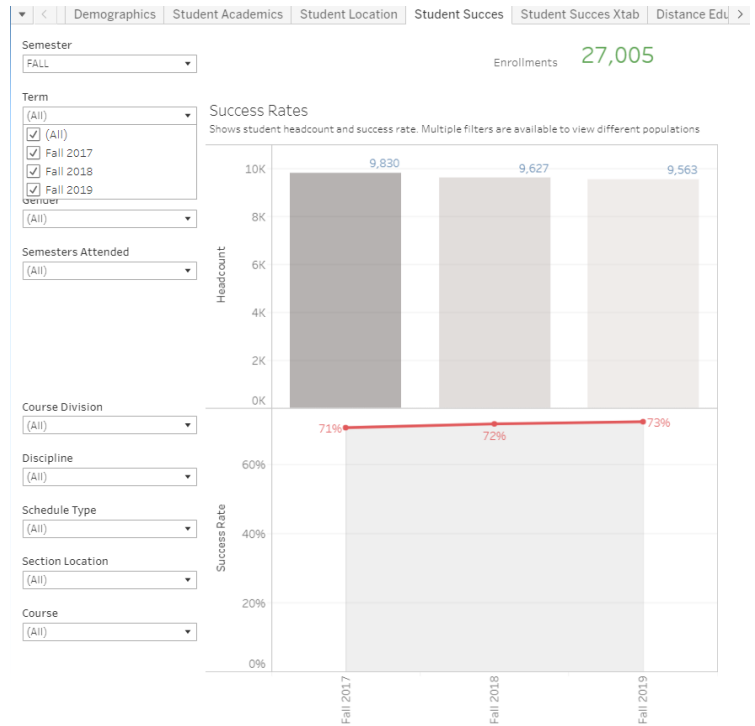
Student Success

This dashboard is used to display student headcounts and success rates over time for the selected cohort.

A number of filters can be applied to narrow down the cohort. These include

- Semester
- Term
- Ethnicity
- Gender
- Number of Semesters Attended
- Course Division
- Discipline
- Schedule Type
- Section Location
- Course

The upper chart simply shows the headcount of the selected cohort. The lower chart shows the success rate as a red line. The grey area shows the institution average success rate to use as a comparison.



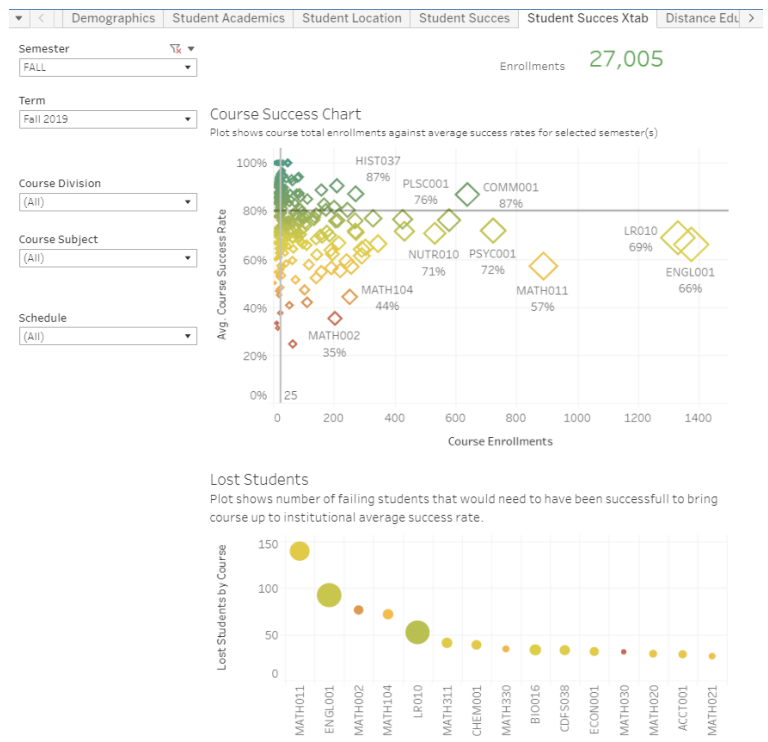
Student Success XTab (Crosstab)

The student success crosstab is used to quickly identify courses that have high enrollments but low success rates. The horizontal axis shows the number of enrollments in the course, the vertical axis shows the average success rate.

The lower chart shows the number of students that have been 'lost'. This is defined as the number of students that would need to be successful in order for the course to have a success rate at the institutional average. This combines the two measurements of enrollment and success rate into a single measure.

The 2 dashboards can be filtered by

- Semester
- Term
- Course Division
- Course Subject
- Schedule

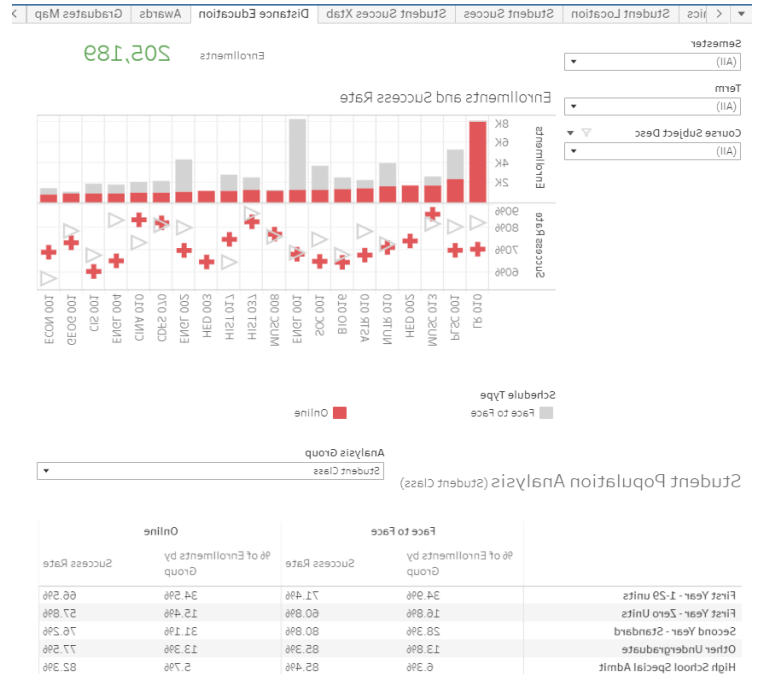


Distance Education

This dashboard is used to look at and compare enrollments and success rates in distance education courses. The overall selection for this view is all courses that have an online component with at least 5 students enrolled. Only the top 20 courses (by distance education enrollments) will be displayed.

The charts can be filtered by

- Semester
- Term
- Discipline



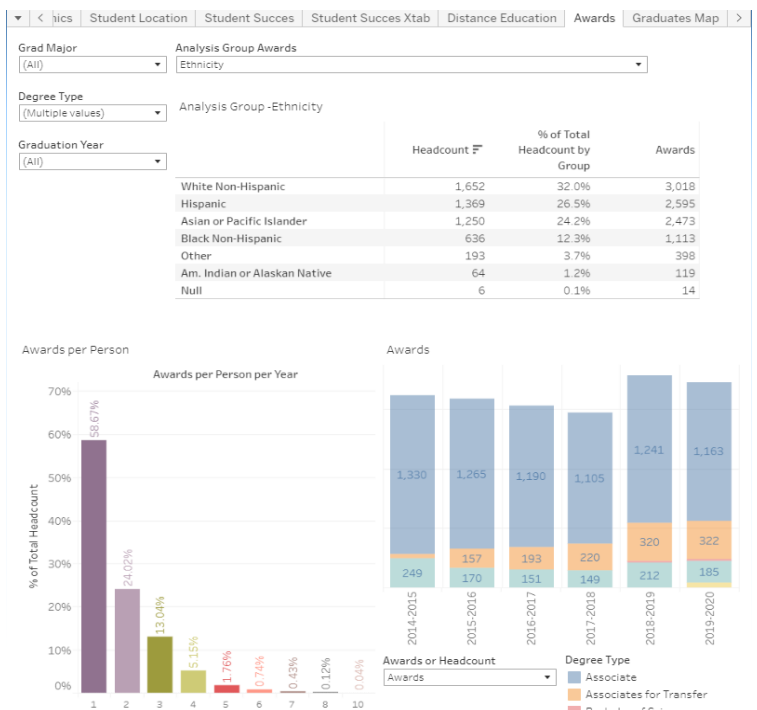
Awards

This dashboard shows information related to awards given to students. The user can filter the date by

- Graduating Major
- Degree Type
- Graduation Year

Additionally, you can view an analysis group to split the data by

- Ethnicity
- First generation
- Gender
- Transfer Students
- Veteran
- Economically disadvantaged



Graduates Map

This dashboard shows information about awarded graduates by location.

