

# Student Profile

## Fall 2007

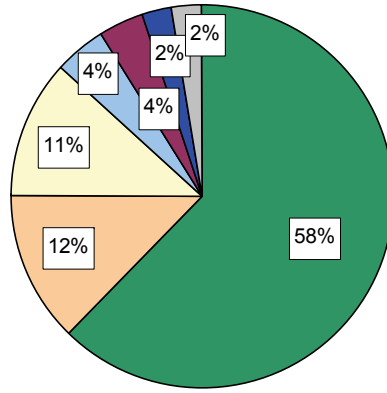
Solano Community College  
Office of Research & Planning

Many forms of financial aid are available to Solano Community College students. The table shows the count and value of the financial aid received in the 2006-2007 academic year. [Note: Counts are duplicated across types.]

Financial Aid Awards	Count	Amount Awarded
BoGG (Enrollment Fee Waiver)	4,082	\$1,554,990
Grants (Pell/EOPS, Cal B, etc.)	3,018	\$4,378,586
Loans	957	\$2,943,526
Scholarships	100	\$107,377
Work Study	101	\$219,495

This report contains data compiled primarily from the databases at Solano Community College. It is based on enrollment at "first census," which is at 20% completion of a course. The data are from the Fall 2007 term, where enrollment was 11,944. The financial aid data were extracted from the California Community Colleges Chancellor's Office data site at [www.cccco.edu](http://www.cccco.edu).

### Educational Goals of Full Time Students



- Transfer to a four-year college with Associate Degree
- Undeclared Goal
- Transfer to a four-year college without Associate Degree
- Associate Degree, without transfer
- Job Skills- to prepare for a new job
- Discover/formulate career interests, plans, goals
- Associate Degree, vocational, without transfer

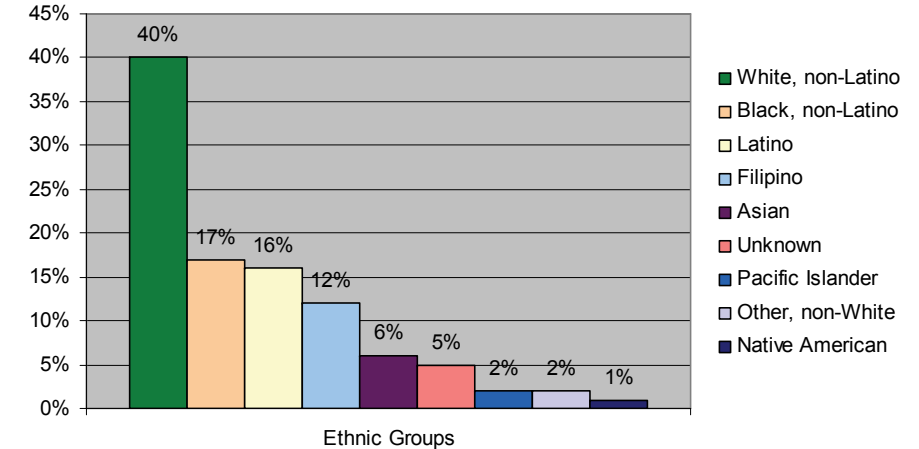
Ninety-three percent of the 3,768 full-time students in Fall 2007 selected one of the top seven goals shown, as self-reported on their application form. Most (69%) intend to transfer with or without a degree from Solano.

Top 10 Majors	Count	Percent
Undeclared	2,640	23%
Registered Nursing	1,617	14%
Business, General	874	8%
Early Childhood Education	406	4%
Criminal Justice, Law Enforcement	406	4%
Liberal Arts	401	3%
Psychology	355	3%
Biology	327	3%
Fire Technology	244	2%
Computer Programming	231	2%

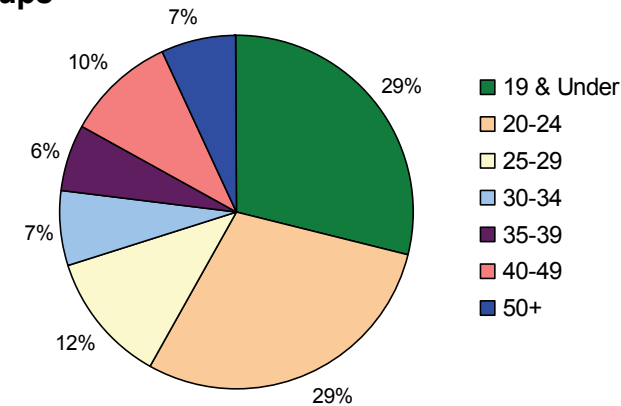
The top nine majors, (following Undeclared) of the seventy-seven majors available, are distributed as shown. Registered Nursing and General Business (Transfer) have remained the top two most popular majors for the last six years. These ten majors account for 66% of total enrollment.

Solano Community College serves a student body composed of many different ethnicities. Two-fifths of the student body is White (non-Latino). The other large ethnic groups are Black (non-Latino), Latino, and Filipino— together accounting for nearly half of the student body.

### Ethnicity



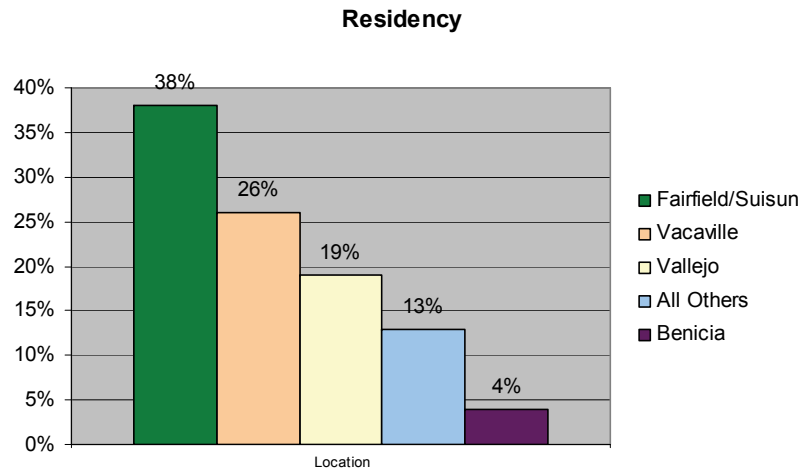
### Age Groups



The largest age groups attending Solano Community College are those students traditionally classified as "college-age," in the categories "19 or under" and "20-24." This group composes 58% of the student body. The remaining 42% is divided among the other age categories.

**Transfers.** According to the California Postsecondary Education Commission, 374 Solano students transferred to the California State University in the 2006-2007 academic year and over 130 to the UC system. These figures do not include students who transferred to private or out-of-state institutions. Source: [www.cpec.ca.gov](http://www.cpec.ca.gov)

The largest group of students (38%) live in the Fairfield/Suisun City region and about one-quarter each live in Vacaville and the Benicia/Vallejo areas. The remaining 13% live outside of Solano Community College's service area.



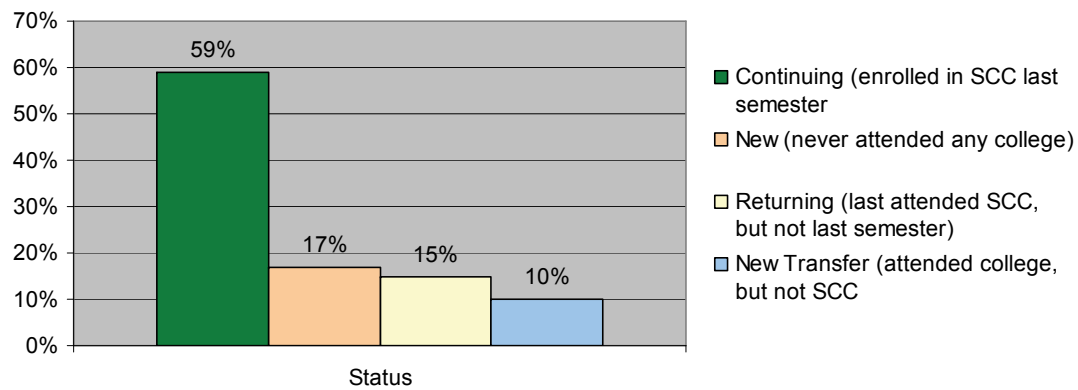
### Gender

Sixty-one percent of the student body is female and thirty-nine percent is male. This distribution has remained fairly steady over the last eight years and reflects regional, statewide, and national trends.

### Non-Native English Speakers

Solano Community College offers several English as a Second Language (ESL) courses. Those students who are non-native English speakers make up 6% of the student population, a decrease of 1.5% from last

### Enrollment Status

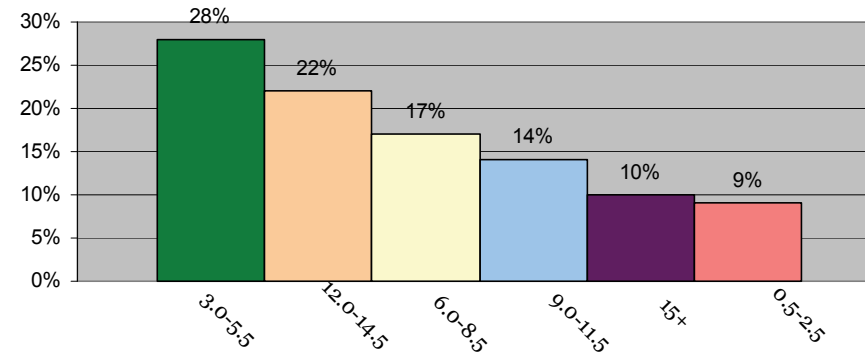


Most of the students at Solano Community College are continuing students; first-time ("new") students and returning students are the next largest groups and nearly equal in size.

For students with high school as their highest level of education, the majority (50%) are freshman-level (less than 30 units completed) and 17% are sophomore-level (30-59 units). Students with either associate or bachelors degrees make up almost 14% of enrollments.

Academic Level	Count	Percent
Freshman HS Graduate (<30 Units)	6,000	50.2%
Sophomore HS Graduate (30-59 Units)	1,989	16.7%
Other HS Grad (≥60 Units)	1,311	11.0%
BA Degree	893	7.5%
AA Degree	750	6.3%
Special Admit - K-12	679	5.7%
Freshman No HS Graduate	203	1.7%
Freshman & Adult School	53	0.4%
Sophomore No HS Graduate	27	0.2%
Other No HS Grad (≥60 Units)	21	0.2%
Sophomore & Adult School	9	0.0%
Other (≥60 Units) & Adult School	7	0.0%

### Units Enrolled



Over two-thirds (68.5%) of the students enrolled at Solano Community College are part-time (less than 12 units) students. The majority (28.4% of the total population) of these take 3.0-5.5 units, normally representing a single 3, 4, or 5-unit class.

Recent high school graduates (those graduating in the spring and enrolling at Solano in the fall) compose 12% of Solano students. Many of them come from local high schools; the schools contributing more than 2% of these 1,443 students are listed in the table along with the size and percentage of their senior classes.

Source: [www.ed-data.k12.ca.us](http://www.ed-data.k12.ca.us)

High School	Total Seniors in AY 06-07	Count Enrolled at SCC	% of Class
Armijo	525	121	23%
Fairfield	502	152	30%
Angelo Rodriguez	484	162	34%
Benicia	442	65	15%
Vacaville	439	160	36%
Will C. Wood	431	155	36%
Vanden	313	131	42%
Jesse Bethel	301	50	17%
Vallejo	275	50	18%
Hogan	272	56	21%
Buckingham Charter	71	28	40%
All others	N/A	313	N/A