

SOLANO COMMUNITY COLLEGE

**VACAVILLE CENTER ANNEX BUILDING
CORBELS REMOVAL PROJECT PHASE 2**

MANDATORY PRE-BID CONFERENCE

APRIL 22nd, 2021



SLIDE 01



PROJECT BID DOCUMENTS



Note:

The information discussed during the Pre-Bid Conference is intended to provide a high-level overview of the project requirements contained in the Bid Documents, and offer potential bidders an opportunity to review and familiarize themselves with the project site conditions. Submission of a Bid signifies Bidder's careful examination of the Bid Documents (including any addenda) as well as to account for the existing site conditions (based on their observations made from visiting the site and historical reference reports).

Oral statements shall not be relied upon and will not be binding or legally effective. All questions must be submitted in writing and will be answered via addenda posted on the District's website.

BIDDING SCHEDULE

BID PHASE SCHEDULE:

- **Mandatory Pre-Bid Conference: Thursday, April 22nd, 2021 at 11:00 am (today).**
- **Last day to submit questions: by Thursday, April 29th, 2021, 2:00 pm**
- **Last Addendum will be issued: by Thursday, May 6th, 2021, 2:00 pm**
- **BIDS DUE: by Thursday, May 13th, 2021, 2:00 pm (Via U.S. Mail or Hand-Delivered)**
 - See Notice to Bidders 00 11 16 for submittal details.
 - Bid Opening will be live streamed over the internet on the District's Website. An in-person opening will not be held. <http://welcome.solano.edu/liveevents/>
- **Post Bid Interview: Friday, May 14th, 2021, *time to-be-determined*.**
- **Solano Community College Board Approval: Wednesday, June 2nd, 2021**

CONSTRUCTION PHASE SCHEDULE:

- **June 21st, 2021 – July 30th, 2021**



BIDDING OVERVIEW



BID SUBMITTAL DETAILS:

- **Formal Bids will be received until 2:00 pm, Thursday, May 13th, 2021 by either Hand-Delivery or U.S. Mail to Solano Community College, 4000 Suisun Valley Road, Fairfield California 94534, Building 1102 (Kitchell Bond Office).**
- **Bid Package must include the following:**
 - Bid Form and Proposal, Specification Section 00 41 13
 - Bid Bond, Specification Section 00 43 13
 - Designated Subcontractor List, Specification Section 00 43 36
 - Site Visit Certification, Specification Section 00 45 01
 - Non-Collusion Declaration, Specification Section 00 45 19
- **Independent In-Person Site Visit is required in addition to Virtual Pre-Submittal Conference. Can be done at any time during the bidding phase.**
- **All Project Bid Documents can be viewed or downloaded on Solano Community College's website at: <http://www.solano.edu/measureq/vendor.php>**
- **This is a Formal Bid, with no Contractor Prequalification.**
- **This project is not subject to a Project Labor Agreement (PLA).**
- **Required Contractor's License: B – General Building Contractor**
- **Apparent Low Bidder will be determined by Base Bid Amount.**

PROJECT TEAM



OWNER:

Solano Community College District

- Lucky Lofton, Executive Bond and Facilities Manager
- Jason Yi, District Project Manager
- Laura Scott, Purchasing

PROGRAM MANAGER/ CONSTRUCTION MANAGER:

Kitchell CEM

- Noe Ramos, Project Manager

PROJECT ARCHITECT:

CA Architects

- Josh Cohn, Architect

**PRE-SUBMITTAL CONFERENCE
SIGN-IN**

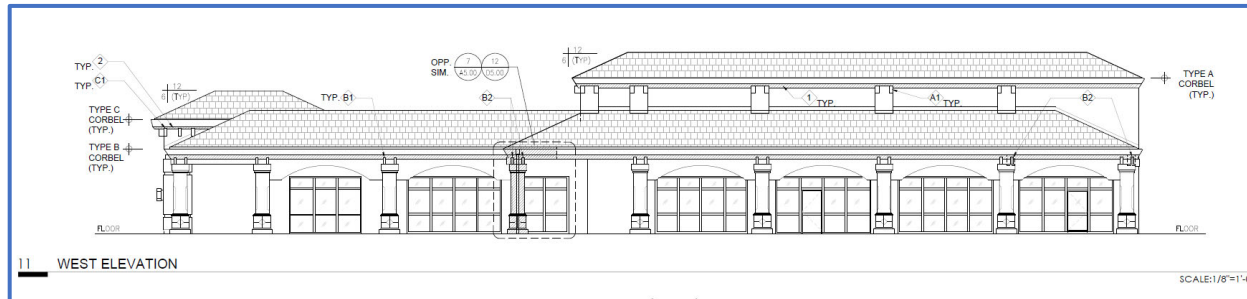
**ROLL CALL FOR MANDATORY PRE-
SUBMITTAL CONFERENCE**

***Pre-Submittal Conference Sign-In Sheet will be
posted on the District's Website**



PROJECT OVERVIEW

SCOPE OF WORK:



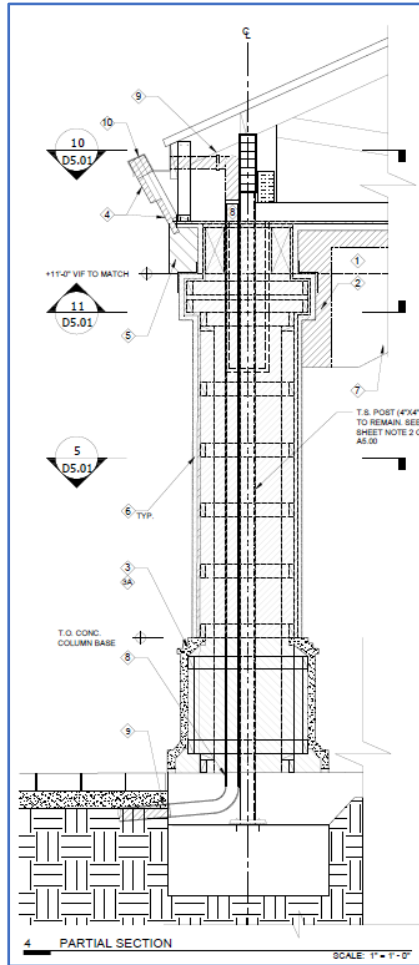
PHASE 2

General Scope:

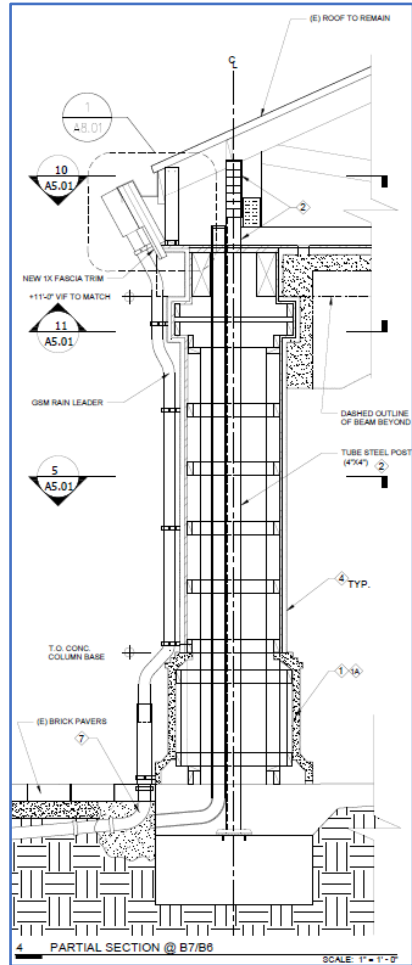
- Complete removal and replacement of a select decorative corbels. Locations are noted on the drawings.
- Installation of new flashing detail at every corbel location.
- Wood fascia work as noted on the project drawing (two separate conditions).
- Painting of all exterior wood trim.
- Repair of one (1) existing building column as outlined in the design documents.

COLUMN SCOPE (GENERAL):

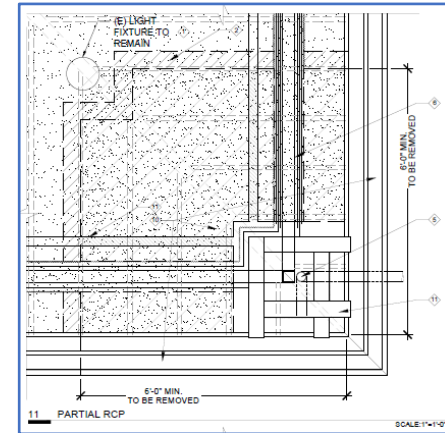
PROJECT OVERVIEW



PARTIAL SECTION – DEMO
D5.00



PARTIAL SECTION – NEW
A5.00



PARTIAL RCP – DEMO
D5.01

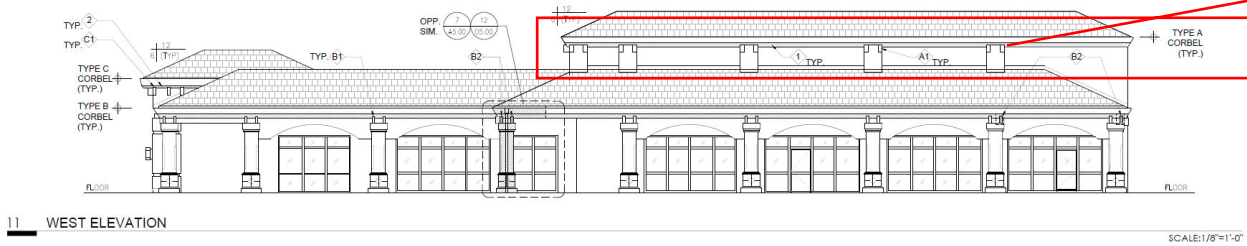


NORTH ELEVATION
A3.00

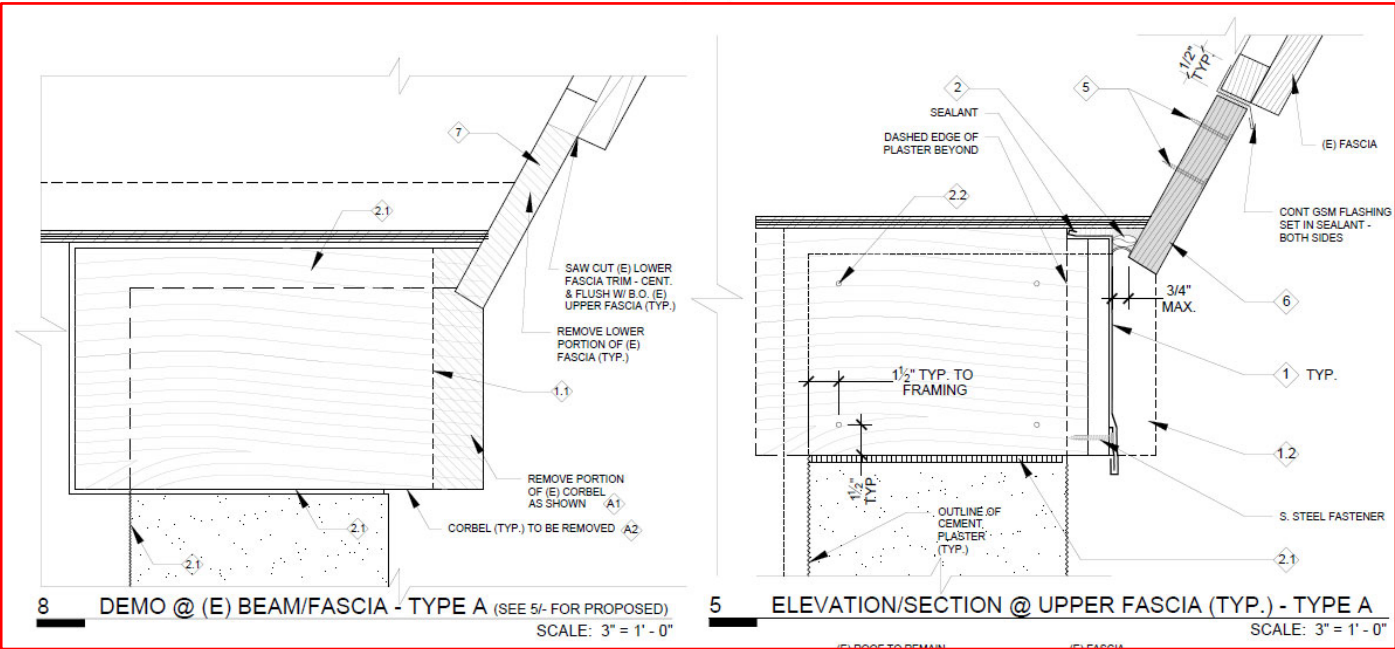
ALL SCOPE NOT SHOWN ON THIS SLIDE. SEE PROJECT DOCUMENTS FOR FULL SCOPE.

PROJECT OVERVIEW

TYPE A CORBEL (GENERAL):



TYPE A

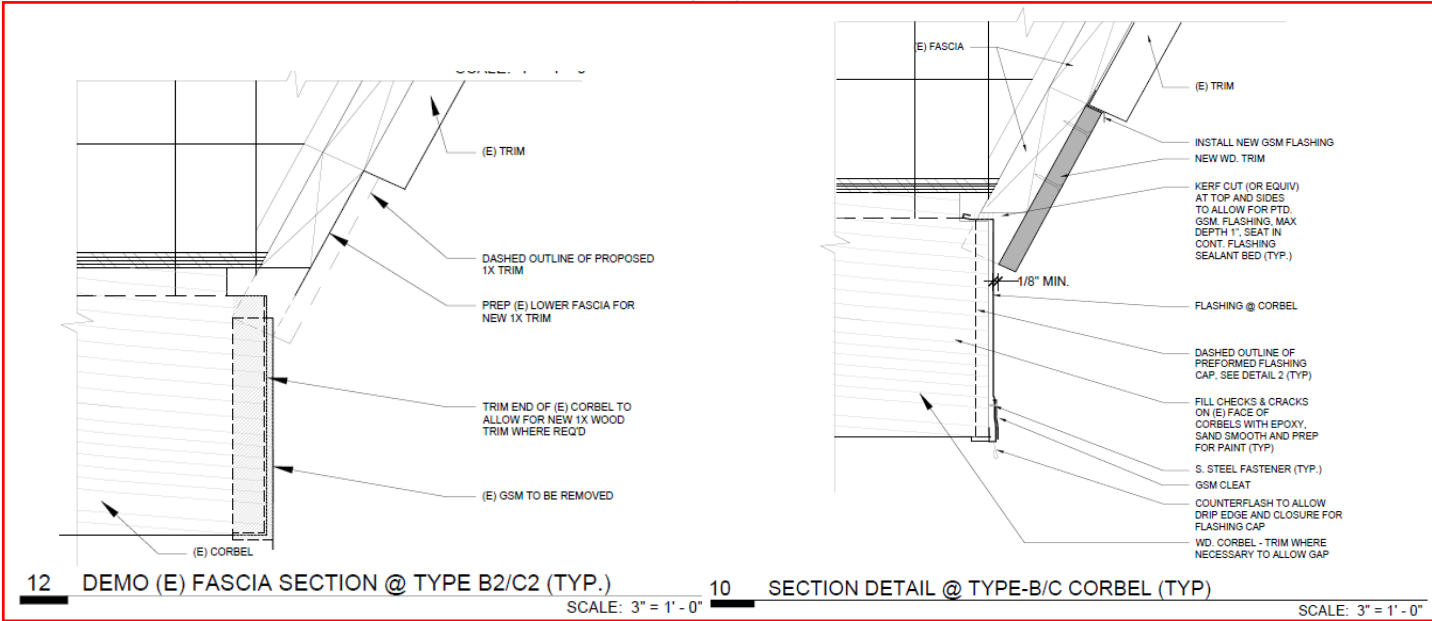
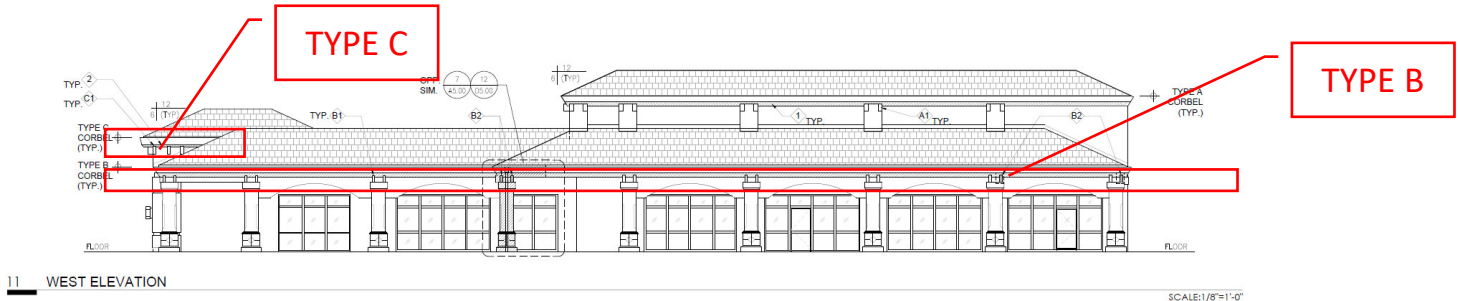


TYPE A2 CORBELS ARE REMOVED AND REPLACED. NOTED ON SHEET A3.00

ALL SCOPE NOT SHOWN ON THIS SLIDE. SEE PROJECT DOCUMENTS FOR FULL SCOPE.

PROJECT OVERVIEW

TYPE B / C CORBEL (GENERAL):



TYPE B2 CORBELS ARE REMOVED AND REPLACED. NOTED ON SHEET A3.00

ALL SCOPE NOT SHOWN ON THIS SLIDE. SEE PROJECT DOCUMENTS FOR FULL SCOPE.



PROJECT PHOTOS
VIRTUAL JOBWALK



NORTH ELEVATION



WEST ELEVATION



NORTH-EAST ELEVATION



SOUTH ELEVATION

PROJECT PHOTOS
VIRTUAL JOBWALK



COLUMN VIEW 1



COLUMN VIEW 2



COLUMN VIEW 3



COLUMN VIEW 4

PROJECT PHOTOS
VIRTUAL JOBWALK



TYPE A - VIEW 1



TYPE A - VIEW 2



Type A - VIEW 3



TYPE A - VIEW 4

PROJECT PHOTOS
VIRTUAL JOBWALK



TYPE B - VIEW 1



TYPE B - VIEW 2



Type B - VIEW 3



TYPE B - VIEW 4

PROJECT PHOTOS
VIRTUAL JOBWALK



TYPE C - VIEW 1



TYPE B - VIEW 2



Type C - VIEW 3

PROJECT PHOTOS
VIRTUAL JOBWALK



TRIM - VIEW 1



TRIM - VIEW 2



TRIM - VIEW 3



TRIM - VIEW 4

QUESTIONS

QUESTIONS?

- *All Bid Phase questions should be emailed to Noe.Ramos@solano.edu*
- **Potential Bidders should check the District website for Addenda:**
<http://www.solano.edu/measureq/vendor.php>

THANK YOU