

The background features abstract, overlapping geometric shapes in various shades of green, ranging from light lime to dark forest green. The shapes are primarily triangles and polygons, creating a dynamic, layered effect. The central text is set against a white background that is framed by these green shapes.

Academic Support Services Redesign Vision

September 2, 2020

Why Integrate?

- ▶ Efficiency & Effectiveness
- ▶ Maximize the positive impact of learning supports
- ▶ Mobilize our people and financial resources
 - ▶ Sustainability & scale
- ▶ Services vs. programs
- ▶ Aligns with our strategic goals

Student - CENTERED Support

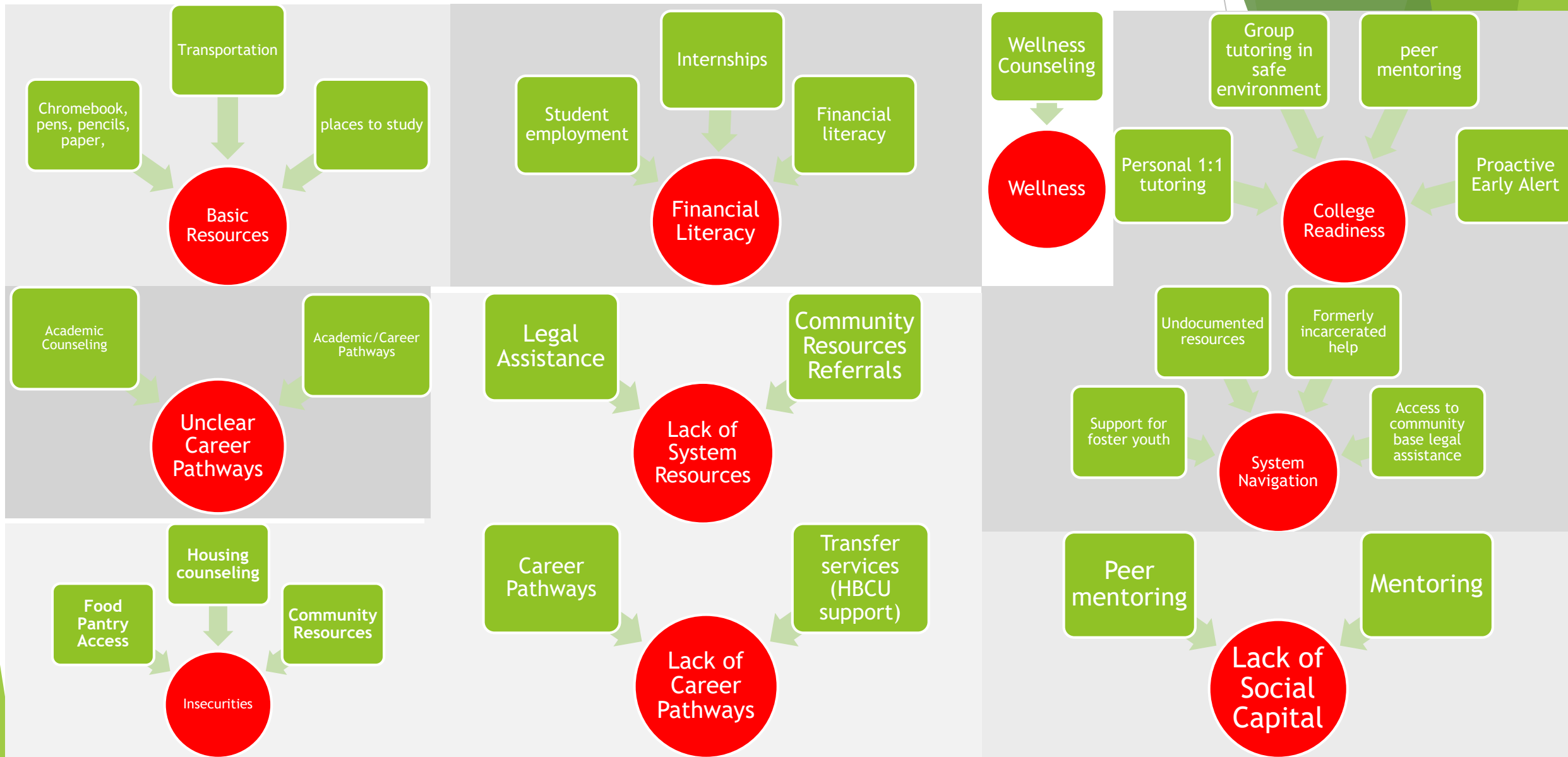
“Students don’t care what we know if they don’t know we care.”

- ▶ Relationships are at the core of students experience on campus.
- ▶ Students want services that are recognizable and intuitive.
- ▶ Students want *“in time, on time”* services.

High/Low Touch Services

- ▶ Low touch services – baseline of services available to every student
- ▶ High touch services -
 - ▶ Case management - HSER Interns; JFK pre-doctoral interns
 - ▶ Peer – to – peer
 - ▶ Community collaborators

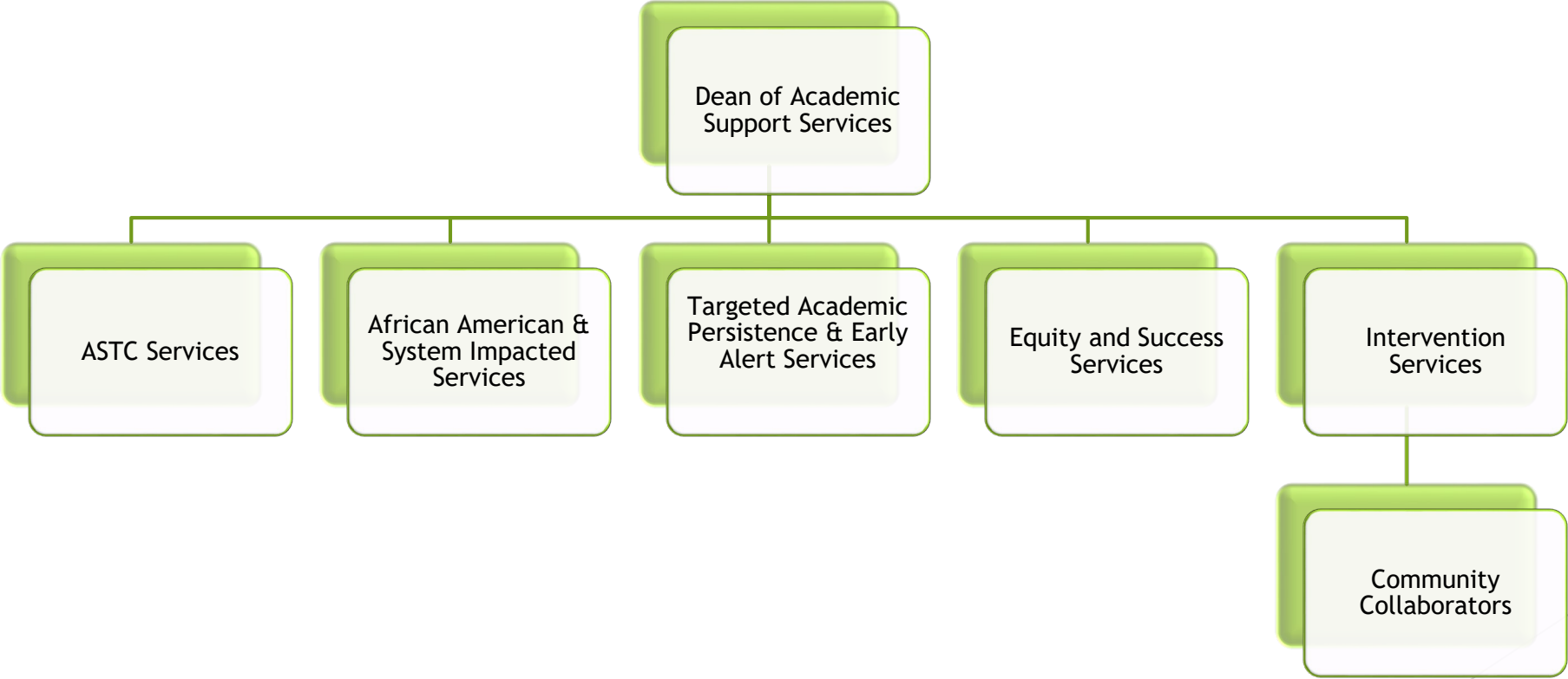
Risk Factors and Protective Factors



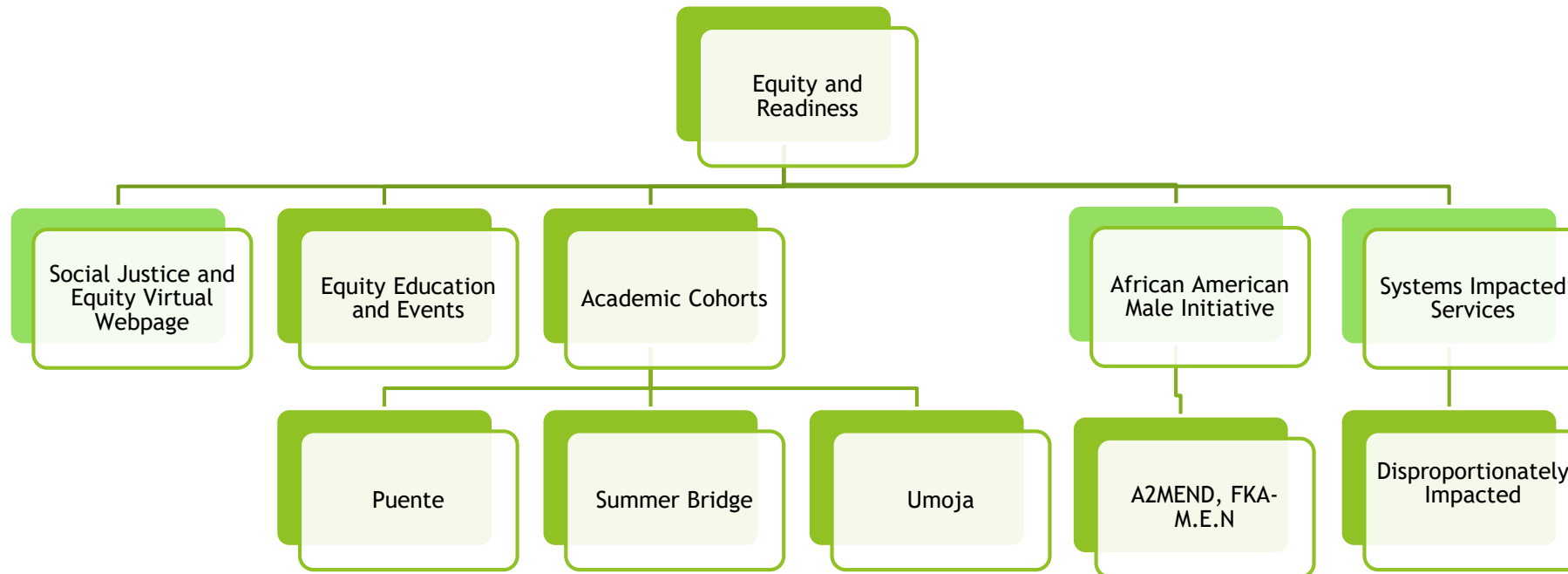
Community Collaborators

- ▶ Expand community partnerships with agencies that are uniquely trained to provide support to our students.
- ▶ Increase our social capital/footprint in Solano county.

Department



Focus Area: Equity and Readiness



Questions