

# Institution Set Standards

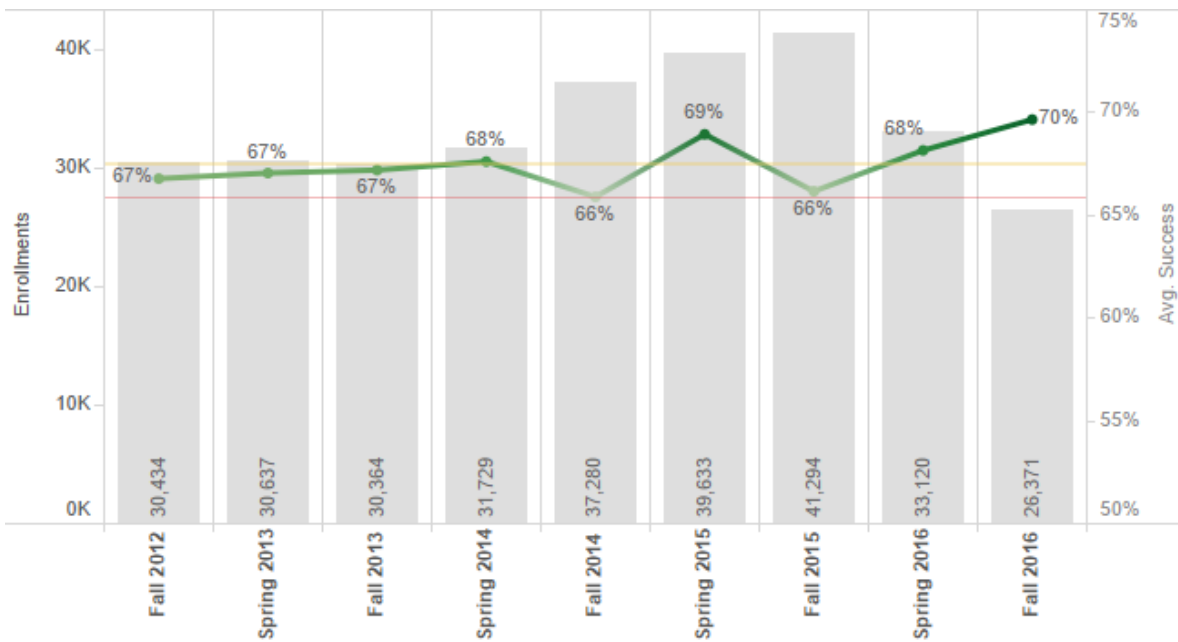
Institution set standards are a requirement of the ACCJC Annual Report but also an important part of accreditation standards. Aside from accreditation it is important that we, as an institution, set performance benchmarks, monitor our progress against them and take corrective action where necessary. Standards are needed for

- Successful Course Completion
- Degrees and Certificates (Degrees, Certificates, Total Awards)
- Number of Students Transferring to 4 Year Institution
- Licensure Pass Rate
- Job Placement Rate

Data for a standards are showing in blue section.  
Green sections show additional/contextual information

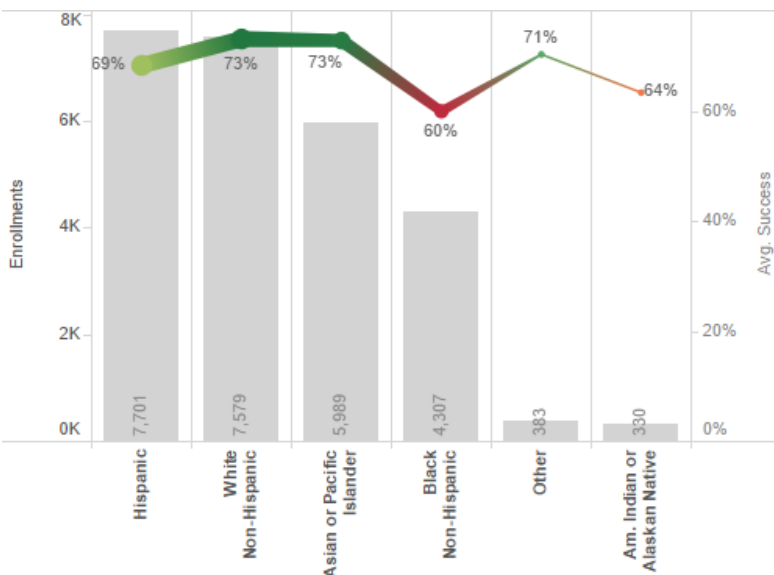
## Institution Set Standard for Successful Student Course Completion

Chart below shows successful course completion for Fall 2010 to Fall 2016. Grey bar shows total enrollments for that semester.



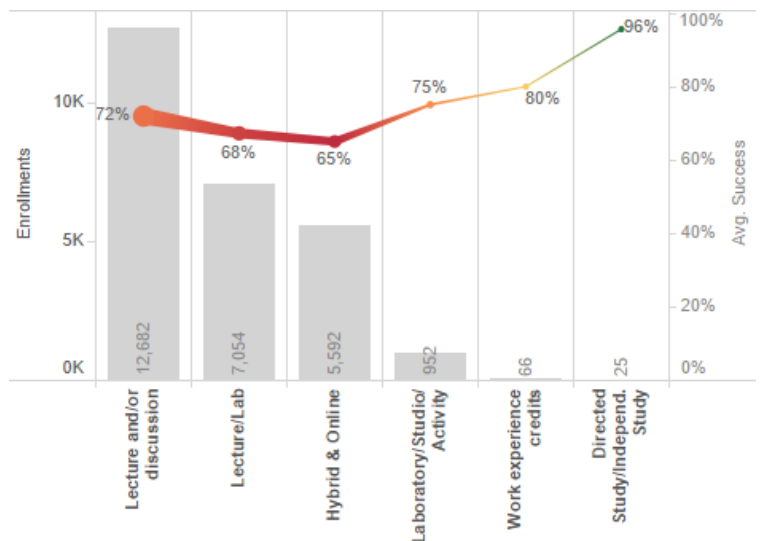
## Success by Ethnicity

Chart below shows success rate (Fall 2016) by student ethnicity. Grey bar shows total enrollments.



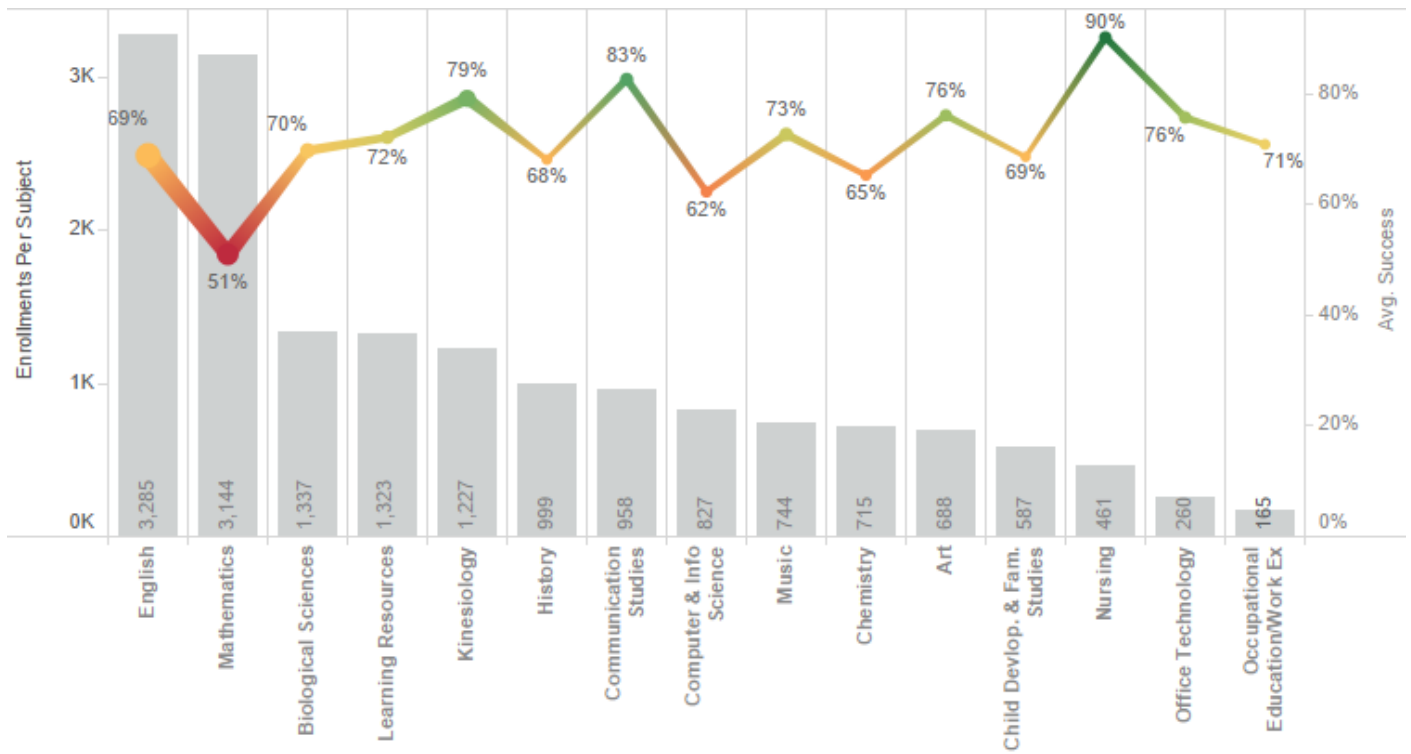
## Success by Modality

Chart below shows success rate (Fall 2016) by course modality. Grey bar shows total enrollments.



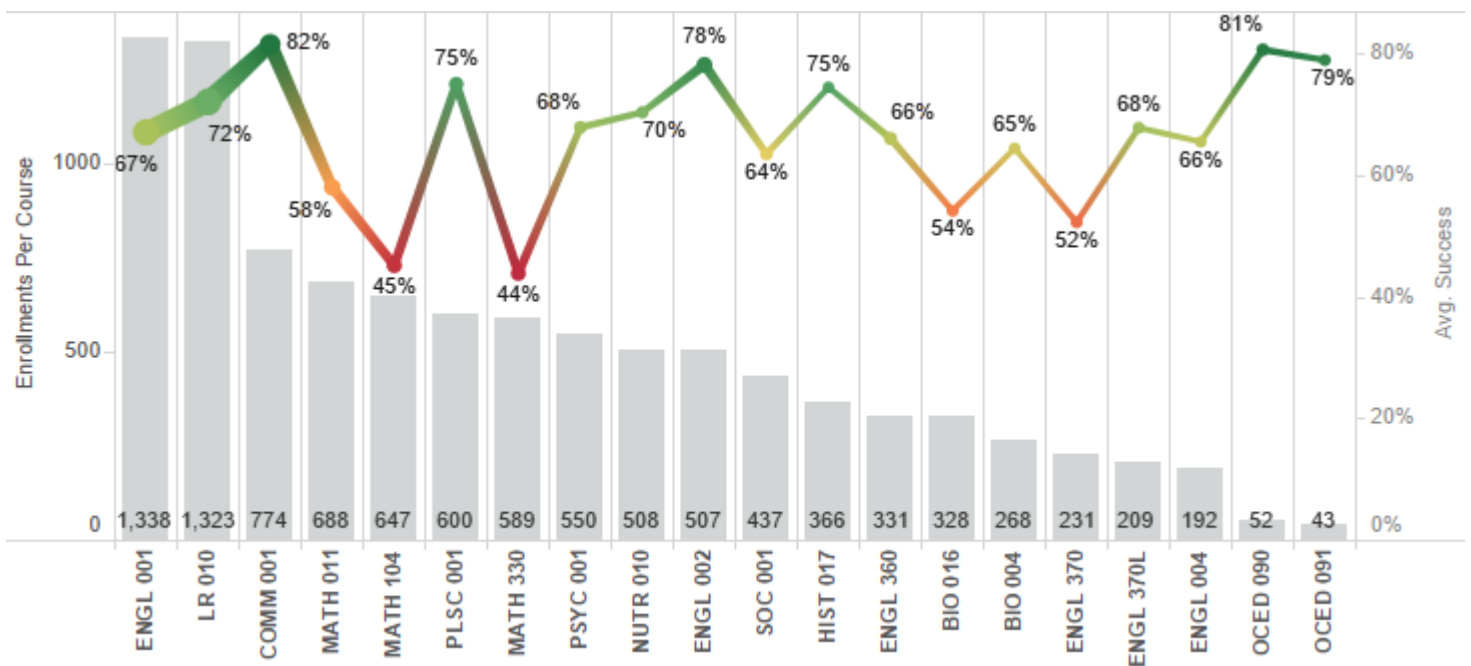
### Success by Discipline (Top 15 by Enrollment)

Chart below shows success rate (Fall 2016) by academic discipline. Grey bar shows total enrollments. Top 15 disciplines by enrollment displayed.



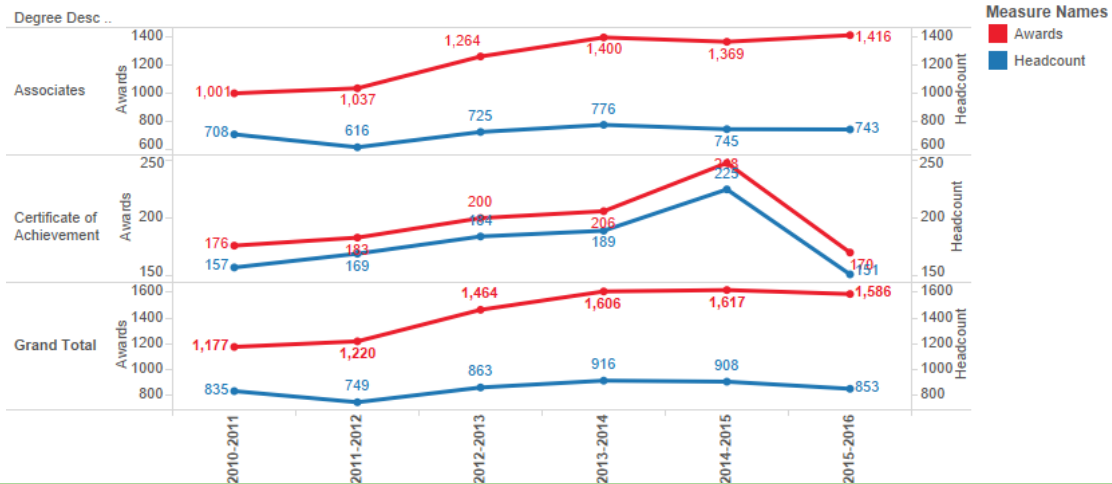
### Success by Course (Top 15 by Enrollment)

Chart below shows success rate (Fall 2016) by course id. Grey bar shows total enrollments. Top 15 course ids by enrollment displayed.



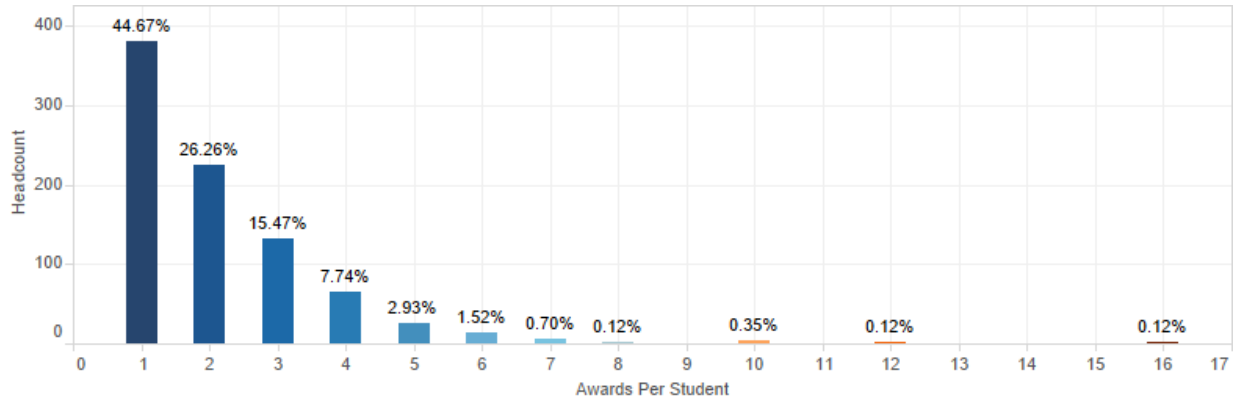
## Institution Set Standard for Headcount for Degrees, Certificates and Total Awards

Chart degrees and certificates by total awards and headcount by degree level. The standard will be set by headcount (blue line)



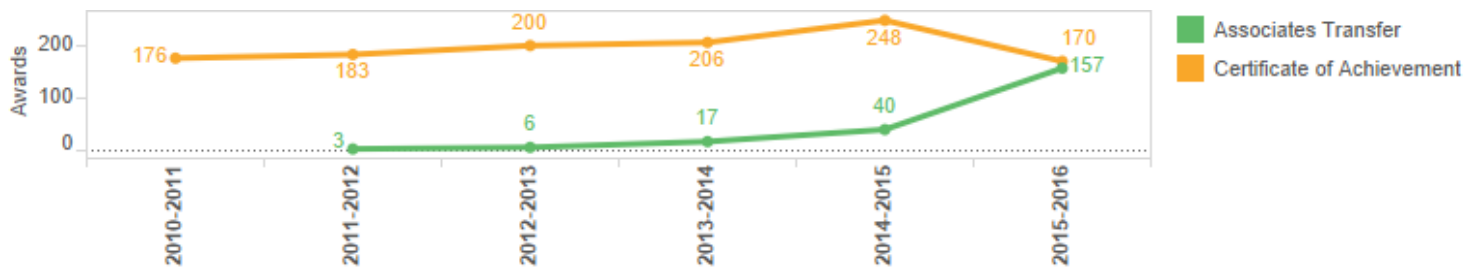
Number of Awards per Student

This chart explains the high difference between awards and headcount with the majority of students obtaining multiple degrees (2015-16 data)



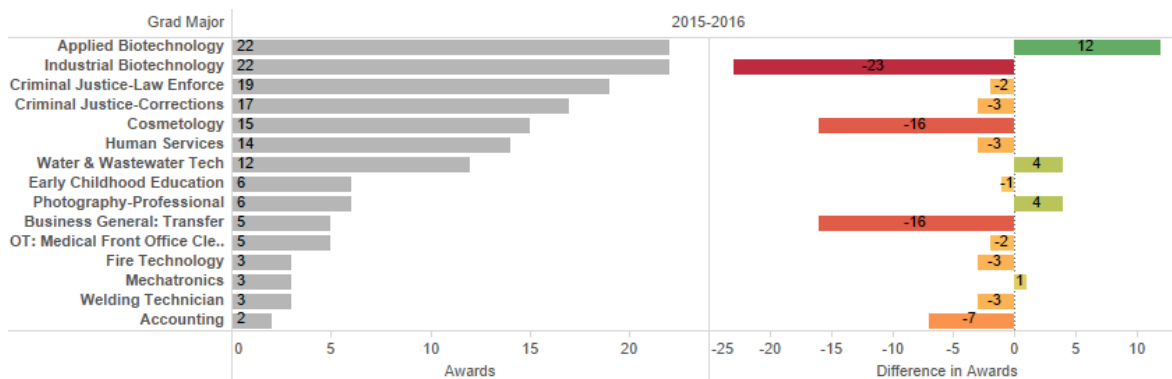
Awards Comparison ADT and Certificate

This chart may explain some of the reason for the sharp decline in certificates. The increased awards of transfer degrees.



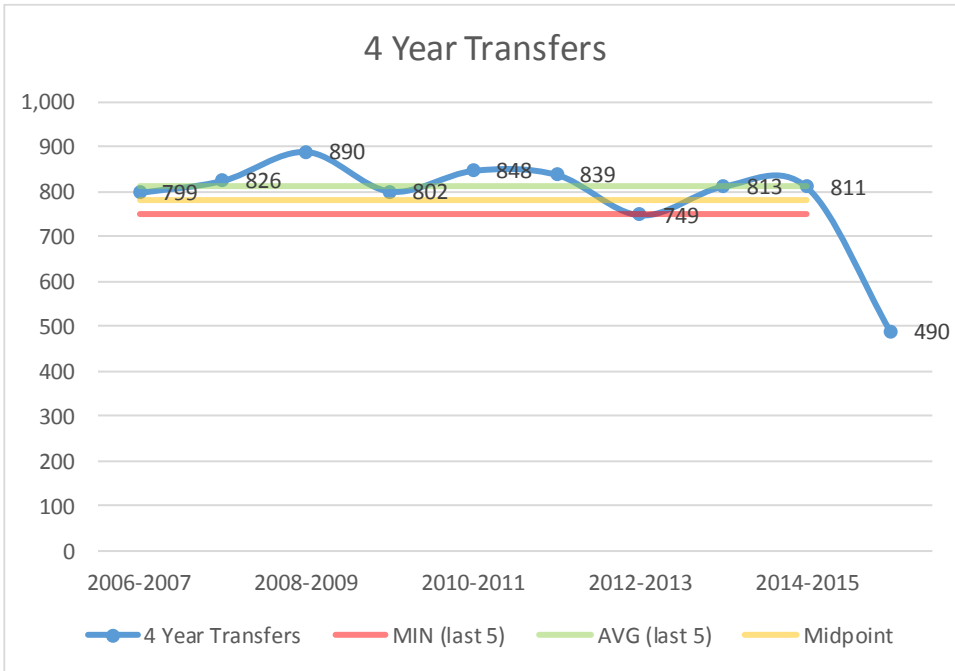
Top 15 Certificates and Annual Change

This chart shows the top 15 certificates and the actual change in number of awards from prior year.

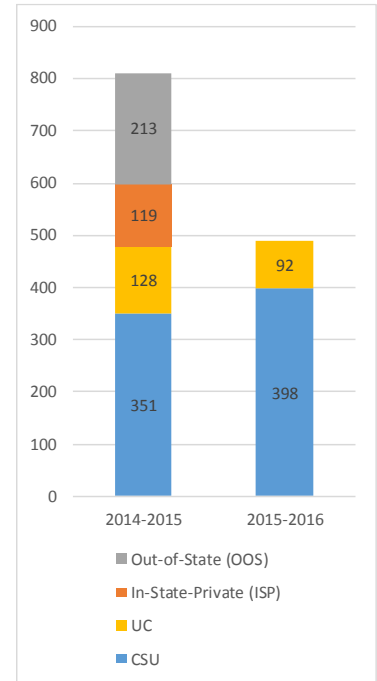


## Institution Set Standard for Transfers to 4 Year

Shows data for total transfers to 4 year institutions by academic year.



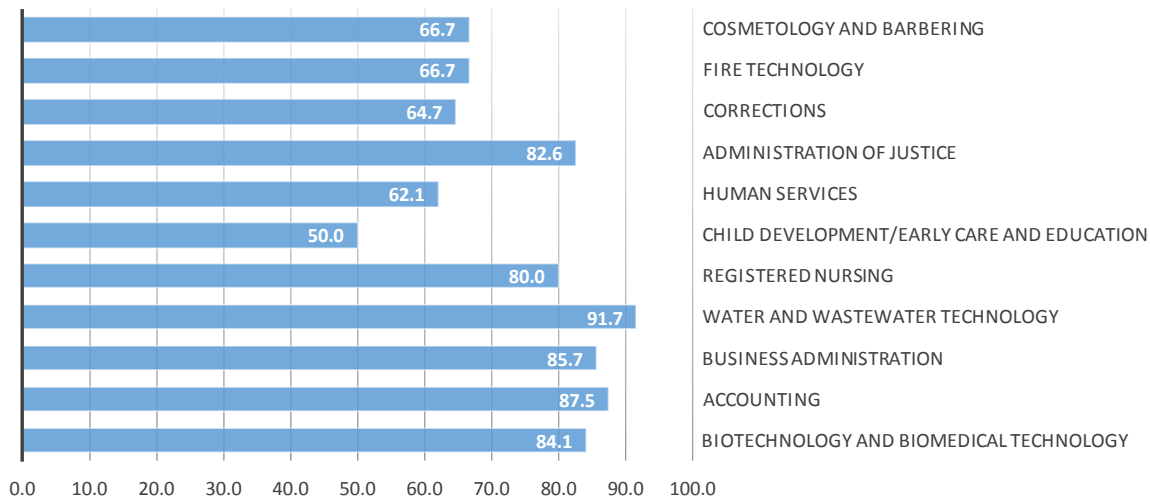
2015-16 data does not include ISP and OOS data (not yet reported)



## Institution Set Standard for CTE Employment Rate

Latest data from Perkins Core Indicators for CTE programs with over 10 students in cohort. Employment rate by 6 digit CIP code.

### Employment Rate



Also need Institutional Set Standard for Licensure Pass Rate